

# ASPECT

VISION DELIVERED



# TRT ASPECT

LED road and amenity lighting



# TRT lighting



**TRT Lighting (Thorlux Road and Tunnel) is a subsidiary of FW Thorpe Plc and is proud to be a UK manufacturer of LED luminaires.**

At TRT Lighting, we are meeting the challenges of today's exterior lighting market by providing high-quality long-life products combined with excellence in customer service. Using innovative and responsive design techniques, we create products that utilise the best available technology, ensuring that TRT Lighting stands at the fore in terms of product development.

As well as paying attention to detail in design and service, TRT Lighting is also committed to minimising the environmental impact of both its manufacturing processes and its products.



*“An abundance of optical distributions, body sizes, mounting methods and LED choices combine with multiple running currents to provide a luminaire range that can truly be tailored to specific requirements.”*



# ATTRACTIVE

*...in many ways*

**Aspect**, the new range of LED luminaires from TRT Lighting, brings a diverse but coordinated collection of solutions to the exterior lighting market. With an appropriate selection from the latest LED technologies, the Aspect range boasts numerous features, advantages and benefits.

An abundance of optical distributions, body sizes, mounting methods and LED choices combine with multiple running currents to provide a luminaire range that can truly be tailored to specific requirements. Project specifications from amenity and area lighting through to P and ME class road lighting situations are all possible, whilst maintaining a synergy of product selection.

Close attention to detail, precise engineering techniques and an exhaustive testing regime has resulted in the Aspect range of luminaires demonstrating effective LED heat dissipation, exceptionally long lifetimes, excellent lumen maintenance and an attractive overall total cost of ownership.

Whilst LED technology promotes a “fit and forget” philosophy, we at TRT recognise that further advances in technology will undoubtedly continue for years to come, hence the Aspect range offers the ability to upgrade the light engine as and when it is deemed beneficial in the future.

# IMPRESSIVE

performance characteristics

- High performance optics including both street lighting and area floodlighting distribution options
- Excellent luminaire lumens per Watt figures providing useful light output, not simply LED flux
- Exceptional heat dissipation ensuring low LED junction temperatures
- Long Life (>100,000hrs to L80) with maintained light output
- 4000K-5700K colour temperatures, CRI 70+
- Optional surge protection with clear indication of a "strike" to assist maintenance
- A range of running currents and programmed dimming profiles available to provide energy savings
- Mini cell, NEMA and CMS node compatible
- With CMS compatibility, TRT provides system integration support to ensure all components are operating within their given parameters and to confirm functionality





- High quality recyclable components & materials including 2 sizes of die cast aluminium housing
- IP66 Ingress protection rating
- IK10 polycarbonate cover, highly vandal resistant
- IK08 glass cover option
- Tool free gear compartment access and gear tray removal
- Horizontal or vertical mounting for 42mm -76mm pole and bracket diameters
- Low weight and windage (<0.07m<sup>2</sup>) for problem free retro fits
- Universal -10°, -5°, 0°, 5° and 10° spigot inclinations
- Negative incline mounting option includes the ability to install lanterns at zero and 5° on existing brackets
- Future proof upgradable light engines
- Purpose designed free draining heat sink
- Optional wall mounting solution

# FLEXIBILITY

without compromise



# RANGE

Aspect 1

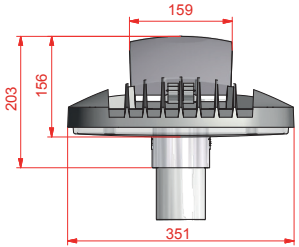
LED Power	Road Optics	Area Optics	Poly Cover	Glass Cover
11-24W	✓	✓	✓	✓

Aspect 2

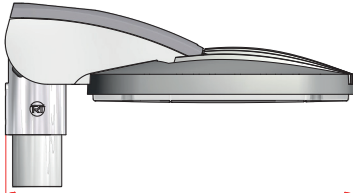
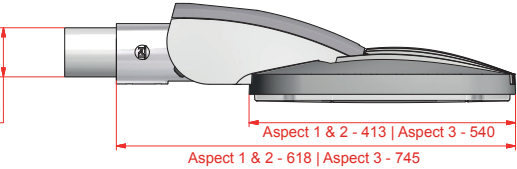
LED Power	Road Optics	Area Optics	Poly Cover	Glass Cover
30-63W	✓	✓	✓	✓

Aspect 3

LED Power	Road Optics	Area Optics	Poly Cover	Glass Cover
36-125W	✓	✓	✓	✓

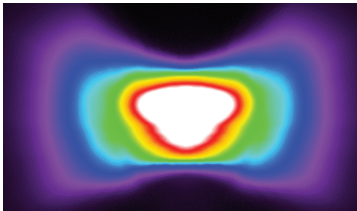
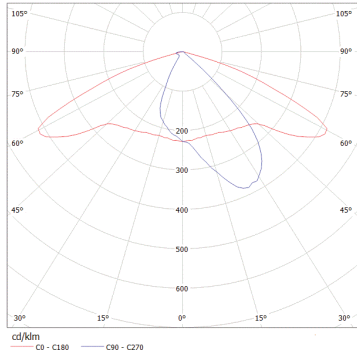


76 DIA  
(60mm or 42mm DIA  
WHEN USING A REDUCER)

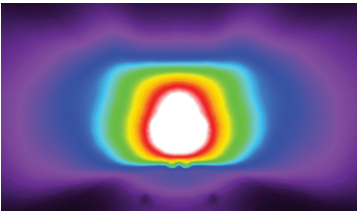
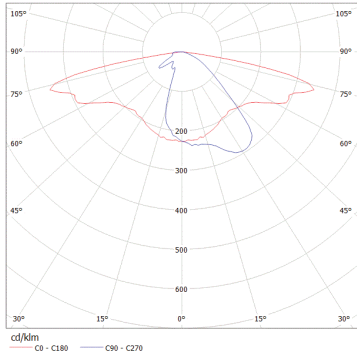


# photometric performance

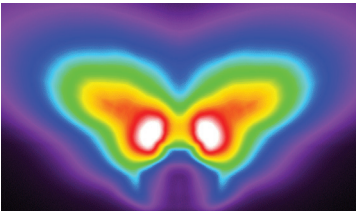
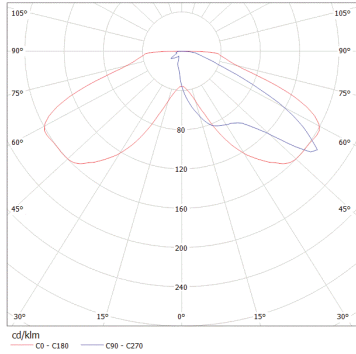
typical narrow road optic



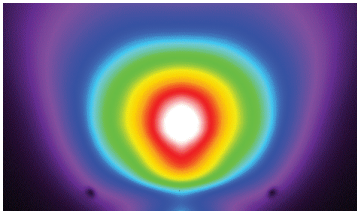
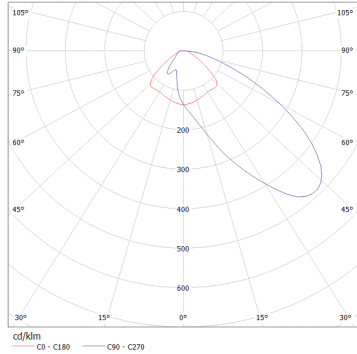
typical wide road optic

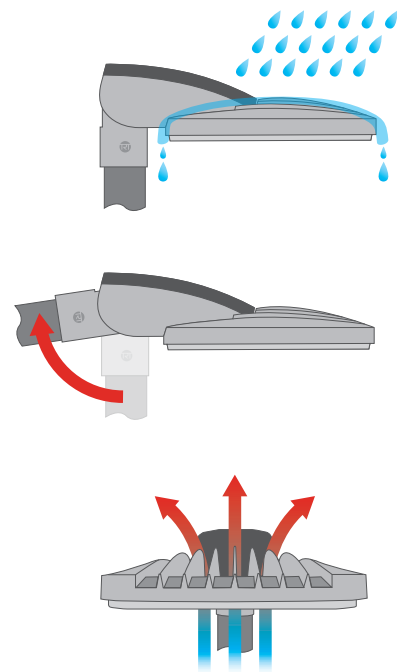


typical lateral area optic



typical forward area optic





**1.** “Free draining” curved heat sink design eliminates any ponding of fluids

**2.** 5° and 10° negative incline mounting allows easy retrofit on to existing columns and brackets whilst maintaining 0° elevation

**3.** Widely spaced heat dissipation fins combined with air flow between heat sink and gear compartment extends gear lifetime

## technical specification

Light Source	LUXEON R & LUXEON M LEDs
LED Power	11W to 125W
LED CCT	4000k to 5700k
LED CRI	>70 as standard
Lumen Output	1,350lm to 14,500lm
Lumen Maintenance	>100,000hrs to L80
Drive Current	200mA up to 700mA
Driver Efficiency	>90%
Overall Luminaire Efficiency	>100 luminaire lumens per circuit Watt
Housing Material	High pressure die cast aluminium
Cover Material	Dished UV stabilised polycarbonate Clear flat toughened safety glass
Lens Material	PMMA
Housing Finish	Chromate free pre treatment Polyester powder coat Grey (RAL9006) Black (RAL9017) <i>Other RAL colours on request</i>
Ingress Protection Rating	IP66
Weight	8kg small head, 9.2kg large head
Wind Area	0.059m <sup>2</sup> small head, 0.068m <sup>2</sup> large head
Impact Resistance Rating	IK10 (Polycarbonate) IK08 (Glass)
Mounting Methods	Post top 60mm or 76mm Side entry 42mm, 60mm or 76mm Wall mounting with dedicated bracket
Mounting Inclination	-10°, -5°, 0°, 5° & 10°
Lighting Control Options	Mini Cell, NEMA Cell or CMS compatible





Unit 1 Target Park  
Shawbank Road  
Redditch  
Worcestershire  
B98 8YN  
England

**T:** +44 (0)1527 521162  
**E:** [info@trtlighting.co.uk](mailto:info@trtlighting.co.uk)  
**W:** [www.trtlighting.com](http://www.trtlighting.com)



A division of F.W. Thorpe Plc  
ASPECT is a Registered Trademark of F.W. Thorpe Plc