

# Accession



Admission of a new Party to the Framework Agreement is covered in Section A.2 of the BSC

Enter the market process

### Enter the market process


This page displays the required Market Entry steps. The options will change upon selecting your organisation of choice.

Select your organisation .

VLP\_Test\_3

<b>Accede to the BSC</b>	<b>Register Authorised Signatories</b>	<b>Register market roles</b>
<b>Complete Qualification</b>	<b>Order communication lines</b>	<b>Register Assets</b>

 **Accession Agreement**

 **Accession Fee**  
£500

 **Base Monthly Charge**  
(exc VAT) £500

Initial letter- company letterhead signed by director

Nomination of persons to carry out specific Code activities

BSCP38- Authorised Signatories

## Market Role Registration

---

- You will need to register your intended market role in Elexon Kinnect.
- The registration process can be found in detail within the BSCP65.
- VLP's are not required to be entered into the Market Domain Data (MDD).

Register Party details in  
Central Systems

Process covered in  
BSCP65

## Communication Lines

Low Grade  
(Download)

5WD

Public Internet

Data Push

Xsec 3 encryption software

Free

High Grade  
Service

60WD

Direct Connection to Private  
WAN

TIBCO to stream data

TIBCO software

Associated Costs

## HG Communication Line Charges

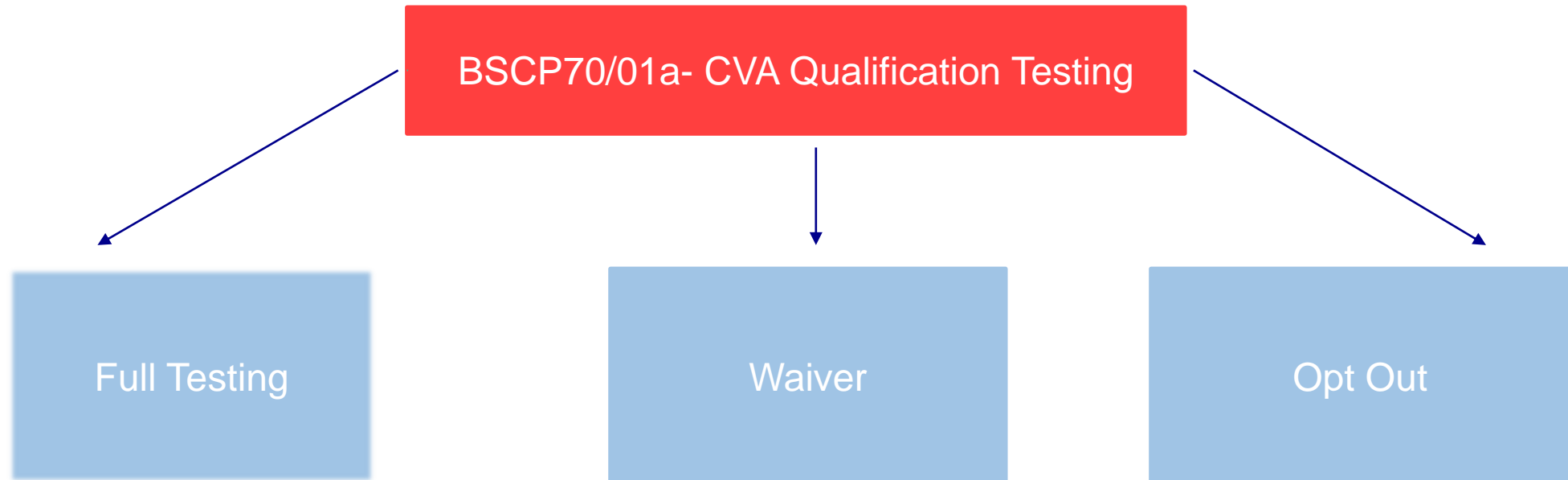
Technical Specification	HG10	DR10
<b>Primary Line Rental:</b>		
10Mb leased Line	✓	✗
2Mb ADSL	✗	✓
<b>Backup Line Rental:</b>		
2Mb ADSL Backup	✓	✗
<b>Support:</b>		
5 Hour Fix on Primary Line	✓	✗
24 Hour Fix on Primary Line	✗	✓
Primary Line Uncontended	✓	✗
Primary Line is Contended	✗	✓
<b>One-off Costs:</b>		
Installation	£4,208	£776
<b>Ongoing Annual Costs:</b>		
Annual Rental (2020/21):	£5,882	£2,440
Annual Support: (2020/21)	£1,089	£1,089
Total Rental + Support (2020/21)	£6,971	£3,529

Table 1 – High Grade Line Monthly Charges (2020/21)

## What is CVA Qualification?

---

All Parties have to complete the CVA Qualification process, ECVNAs & MVRNAs cannot Opt Out

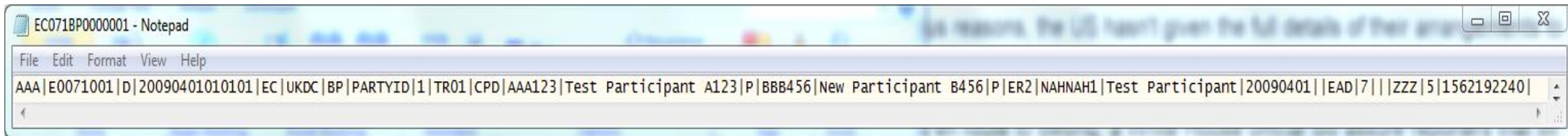


# CVA Qualification FAQ

Which flows do I need to test?  
- *Refer to BSCP70/01(a)*

Are there example flows?

Flow	Participant	Direction	Name	Purpose	Test? Delete as applicable
CRA-I014	Generators; Suppliers; LDSOs; Non-Physical Traders; Interconnector Users and VLPs	To	Registration Report	To enable Party to ensure that its registration details are accurately recorded in Central Systems. This includes Party Id, Name, address etc	Yes/No
ECVAA-I007	Generators; Suppliers; Non-Physical Traders and Interconnector Users	To	ECVNAA Feedback	To confirm to Party that an Authorisation has been processed	Yes/No
ECVAA-I008	Generators; Suppliers; Non-Physical Traders and Interconnector Users	To	MVRNAA Feedback	To confirm to Party that an MVRNA Authorisation has been received	Yes/No
ECVAA-I009	Generators; Suppliers; Non-Physical Traders and Interconnector Users	To	ECVN Feedback	To report the rejection (for business reasons) of a received ECVN	Yes/No



What documentation should I read?  
- *Communication Requirements Document and Interface Definition Document*

Are there Third Party software providers?  
- *Yes*

What if I fail?  
- *If at first you don't succeed, try and try again*

## P-Flow Testing

P-flows listed in the Interface Definition Document:

Direction	From	To	Data Flow	Flow description
Incoming	VLP	SVAA	P0278	MSID Pair Allocation
Outgoing	SVAA	VLP	P0279	Confirmation of MSID Pair Allocation
outgoing	SVAA	VLP	P0280	Rejection of MSID Pair Allocation
Outgoing	SVAA	VLP	P0281	Loss of MPID Pair Allocation
Incoming	VLP	SVAA	P0282	MSID Pair delivered Volume
Outgoing	SVAA	VLP	P0283	Rejection of MSID Pair Delivered Volume
Outgoing	SVAA	VLP	P0284	Confirmation of MSID Pair Delivered Volume
Outgoing	SVAA	VLP	P0285	MSID Pair Delivered Volume Exception Report
Outgoing	SVAA	VLP	P0288	Secondary Half Hourly Consumption Volumes

Evidence can be provided as part of the Self-Assessment Document, Testing Section 3.



BSCP301  
Funds  
Accession Form

24hr Credit  
Contacts x2

Credit Cover

# How do I register Secondary BM Units?

Supplier Volume Allocation (SVA) Half Hourly (HH) metered generation and / or demand within a single GSP Group can be allocated to a Secondary BM Unit for the purpose of providing Balancing Services to the National Electricity Transmission System Operator (NETSO)

**ELEXON KINNECT**

MY ACCOUNT | **MY ASSETS** | MY ROLES | QUALIFICATIONS | EXIT THE MARKET

### My Assets

This page allows you manage your assets. The displayed options will depend on your choice of the organisation.

**Select your organisation**

Flextricity Limited

- Manage Assets
- Assets History
- Manage QMijs
- Manage GC/DC Breaches
- Manage MSID Pairs
- MSID Status Report

**Contact information**  
BSC Service desk  
[bscservicedesk@cgi.com](mailto:bscservicedesk@cgi.com)

**My Tasks**  
There are no open Tasks

**Accessibility**  
Please let us know if you are unable to access this information or need it in an alternative format.  
[communications@elexon.co.uk](mailto:communications@elexon.co.uk)

Process in BSCP15/4.14

15 WDs prior to your BM Unit registration date

### Lodging Credit Cover

- Contact [credit-default@elexon.co.uk](mailto:credit-default@elexon.co.uk) to discuss credit scenarios
- Contact [bsc.servicedesk@cgi.com](mailto:bsc.servicedesk@cgi.com) before lodging cash or to provide Letter of Credit

### National Grid ESO's Pre-Qualification

- Contact [commercial.operation@nationalgrideso.com](mailto:commercial.operation@nationalgrideso.com)

### Participant Test Service (PTS)

- £939 +VAT per test slot
- Complete PTS booking form and submit to [bscservicedesk@cgi.com](mailto:bscservicedesk@cgi.com)

---

## Extra Considerations- Modifications

---

Below are some outstanding Modifications which VLPs should be aware of:

### P375 'Metering behind the Boundary Point'

P375 proposes to settle Secondary Balancing Mechanism (BM) Units using metering equipment behind the defined Boundary Point for Balancing Services (known as 'behind the Meter'), rather than settling using Metering Equipment at the Boundary Point as per current BSC obligations.

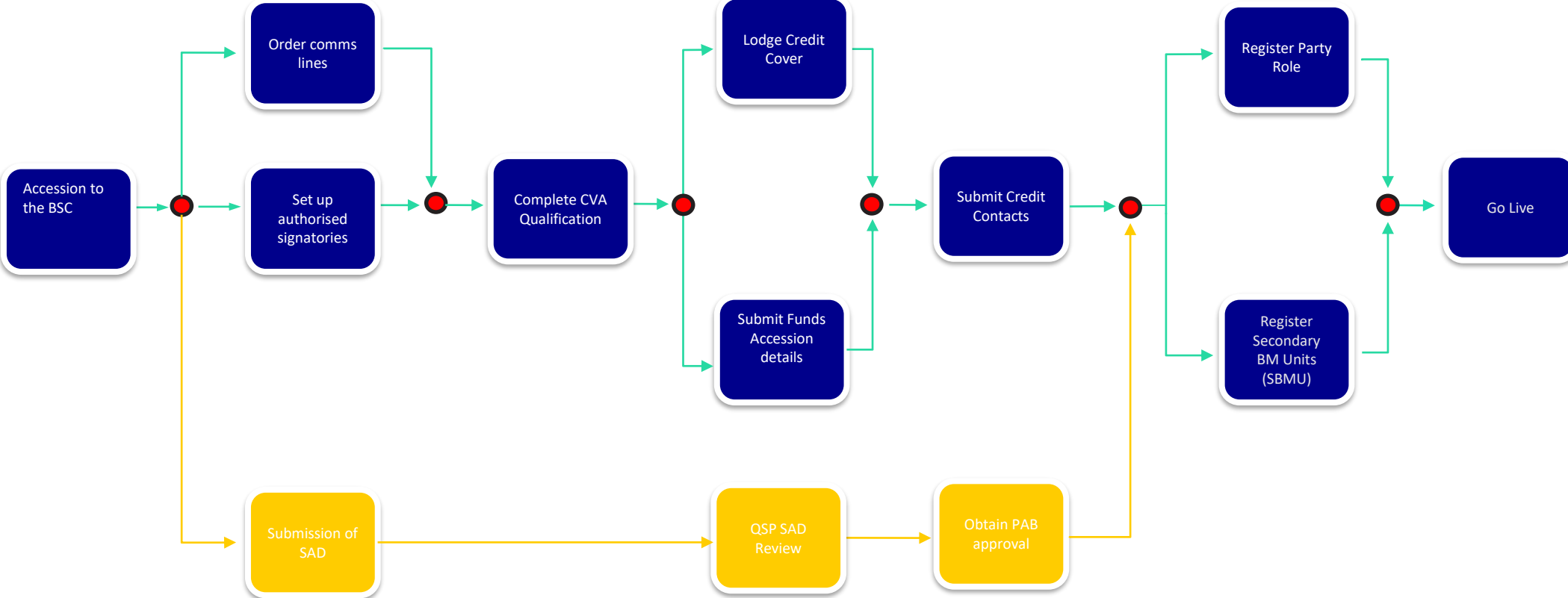
### P376 'Utilising a Baselining Methodology to set Physical Notifications'

P376 proposes to allow the Final Physical Notification which feeds into the Settlement of Trading Charges to be created via a Baselining Methodology. The new Physical Notification will be de-coupled from the Physical Notification used by National Electricity Transmission System Operator (NETSO) for dispatch.



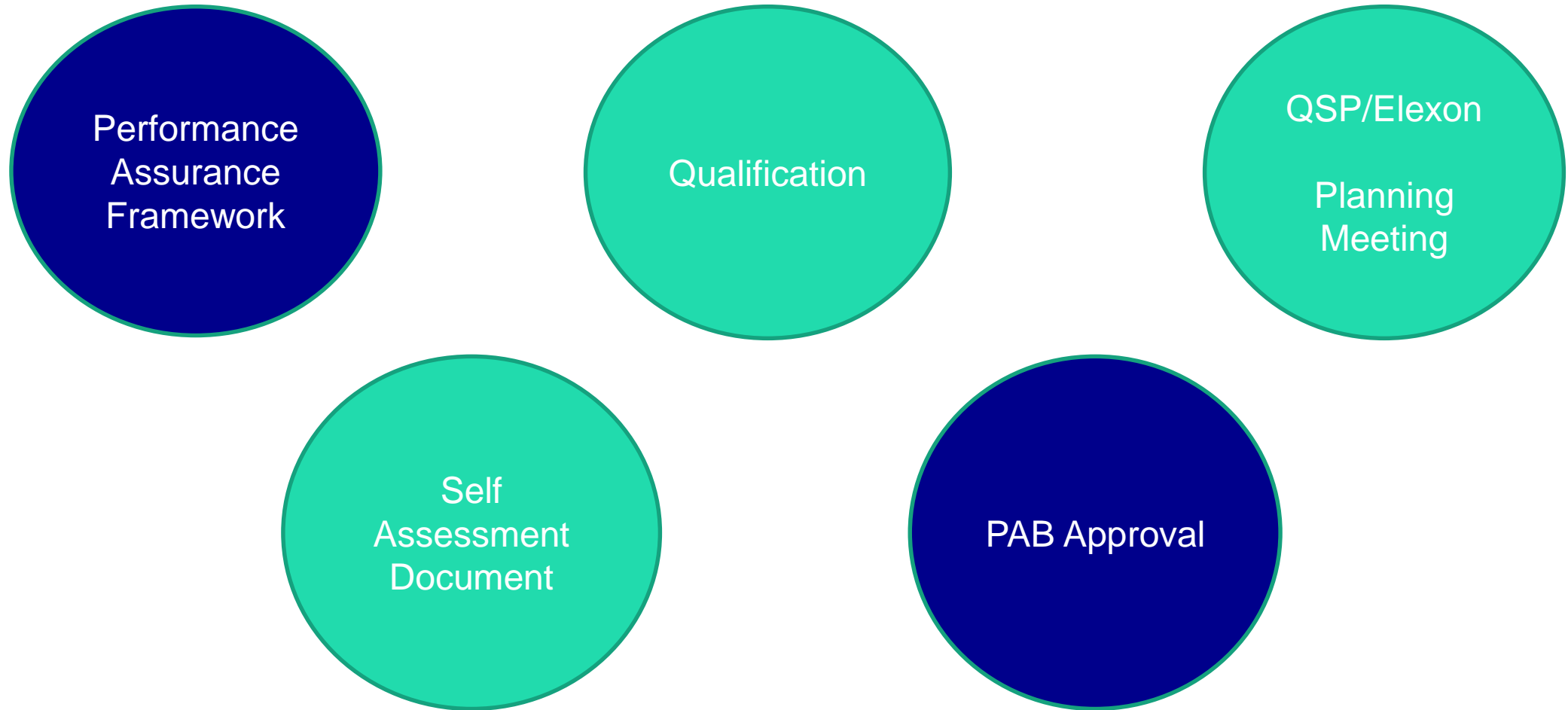
# SVA QUALIFICATION

# Market Entry for a VLP



## SVA Qualification overview

---



## Who it applies to

Applies to:

Suppliers
Virtual Lead Parties
SVA Supplier Agents- (NHHMOA, HHMOA, NHHDC, HHDC, NHHDA, HHDA and MA)
CVA MOAs
LDSOs- (only when acting in their capacity as SMRA and/or UMSO)

- Qualification Process is documented in Section J of the BSC and in BSCP537 'Qualification Process for SVA Parties, Party Agents and CVA MOAs'.
- Qualification Service Provider (QSP) appointed by Elexon is KPMG to review Qualification Applications on its behalf.
- QSP's 'Approach to Qualification' is published on the Elexon website.

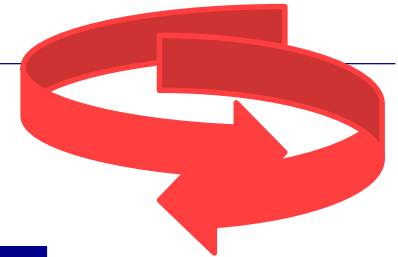




# Self Assessment Document

The SAD is split into 19 sections

VLPs are only required to complete Sections 1 to 6 and Section 19



**Iterative  
Process**

## Generic Sections

1. Introduction

2. Project Management

3. Testing

4. Operational Security and Controls

5. Chance Management and Risk Assessment Process

6. Management, Resource Planning and Local Working Procedures

7. Initial Data Population and/or Data Migration

## Specific Sections

8. NHH DC

9. HHDC

10. NHHDA

11. HHDA

12. SMRA

13. SVA HHMOA

14. SVA NHHMOA

15. CVA MOA

16. Meter Administrator

17. UMISO

18. Supplier

**19. Virtual Lead Party**

### Objective Statement



#### **Objectives of this section**

To ensure that the testing carried out by the Applicant can be relied upon to check that additional risk does not enter Settlement and that current and future Market Participants are not adversely impacted.  
To provide assurance that the testing plans and procedures followed (in respect of IT and/or manual processes) are of sufficient rigour to ensure that these risks are adequately addressed.

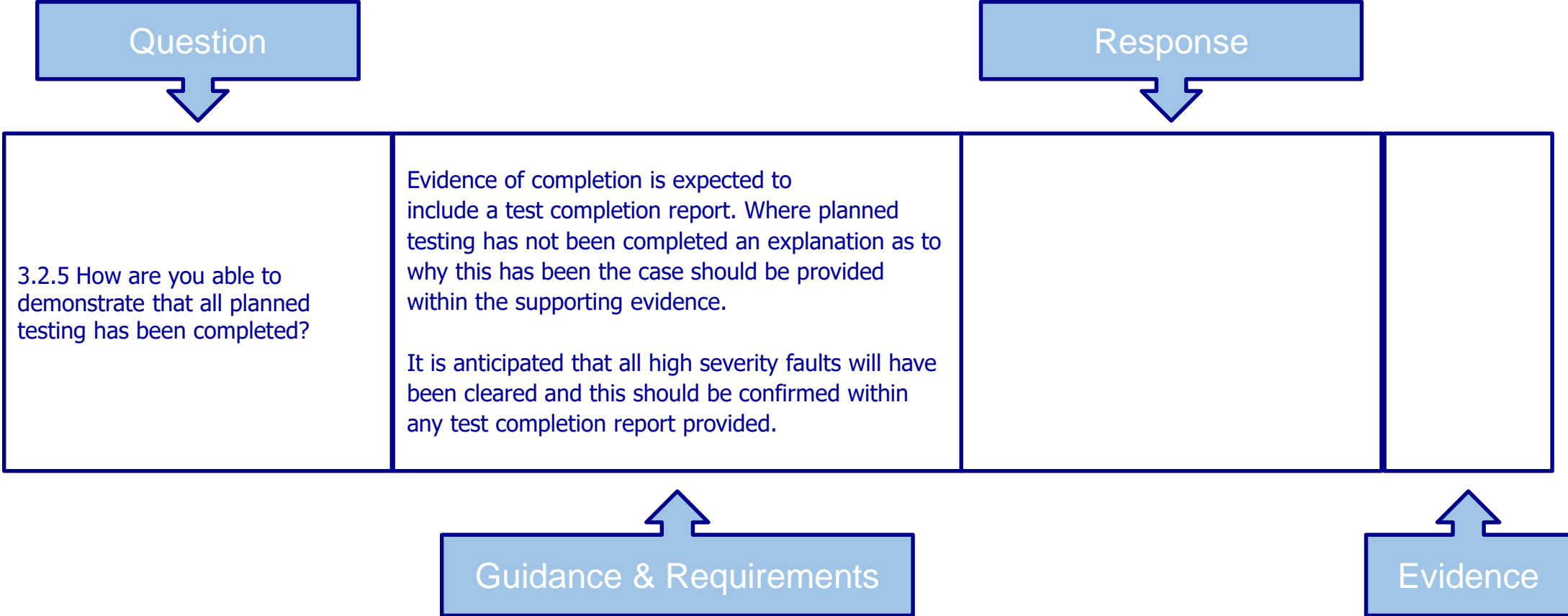
#### **Guidance for completing this section**

The Applicant should be able to demonstrate that they have a comprehensive, documented approach to testing of the systems being developed that is appropriate for the relative complexity of the system.  
Where an Applicant has indicated that the evidence to support a response is the testing conducted, as part of Entry Processes then this evidence will not be reviewed as part of the process. The QSP will review the response only. In completing the response the Applicant will need to demonstrate that they have satisfied themselves that the BSC requirements have been met and that the test evidence is appropriate for the specific response made.  
Applicants that have relied on a third party supplier for the development of their systems should respond to subsections 3.1 and 3.4 in addition to either 3.2 or 3.3. The questions in subsections 3.2 or 3.3 may require the Applicant to seek assistance from the third party in order to provide a response, however in all cases the responses are the responsibility of the Applicant. There may be an overlap in responses given and the Applicant should consider the most appropriate way to co-ordinate their own responses and those of the third party provider.

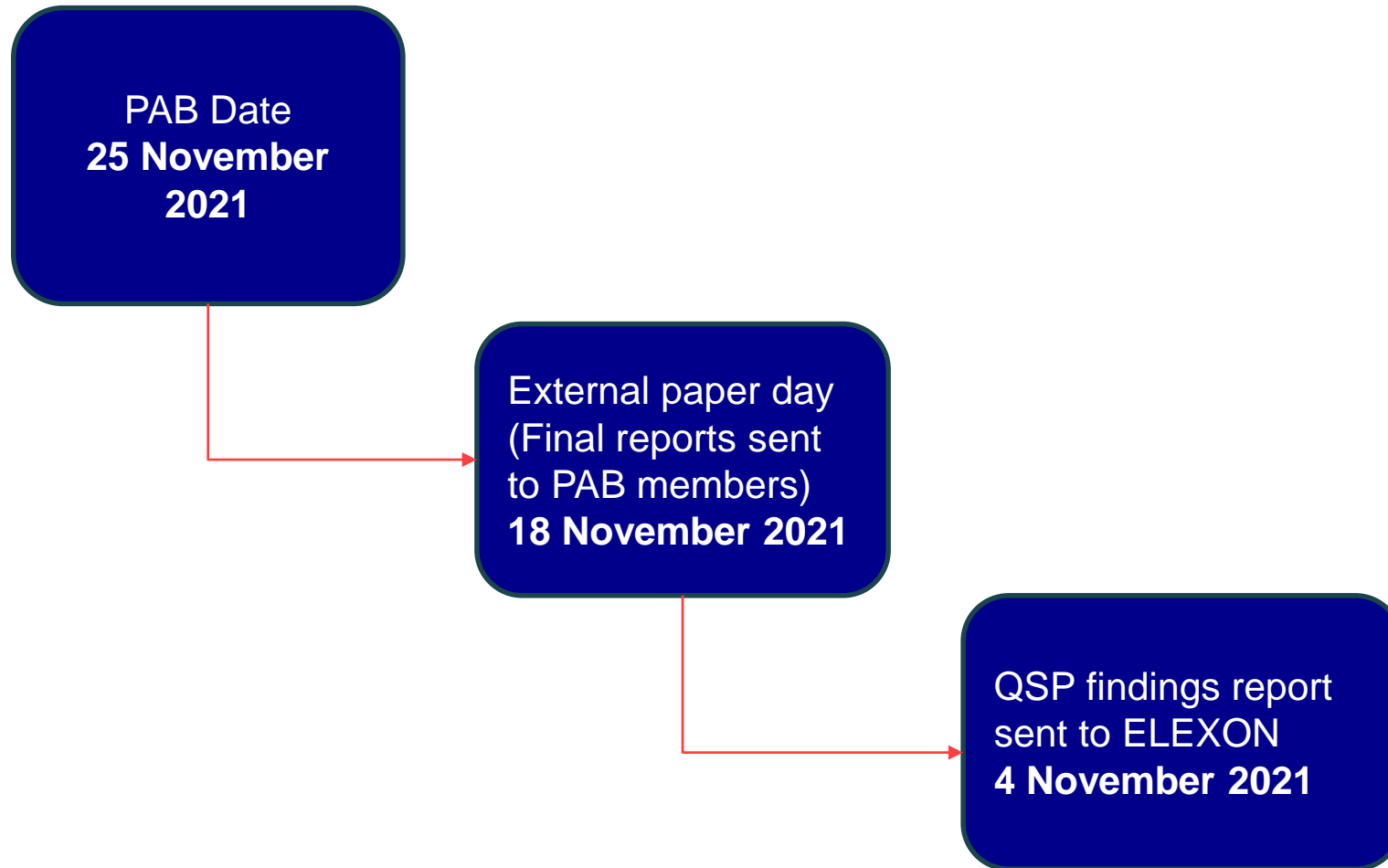


### Section Guidance

# SAD Sample Question Format

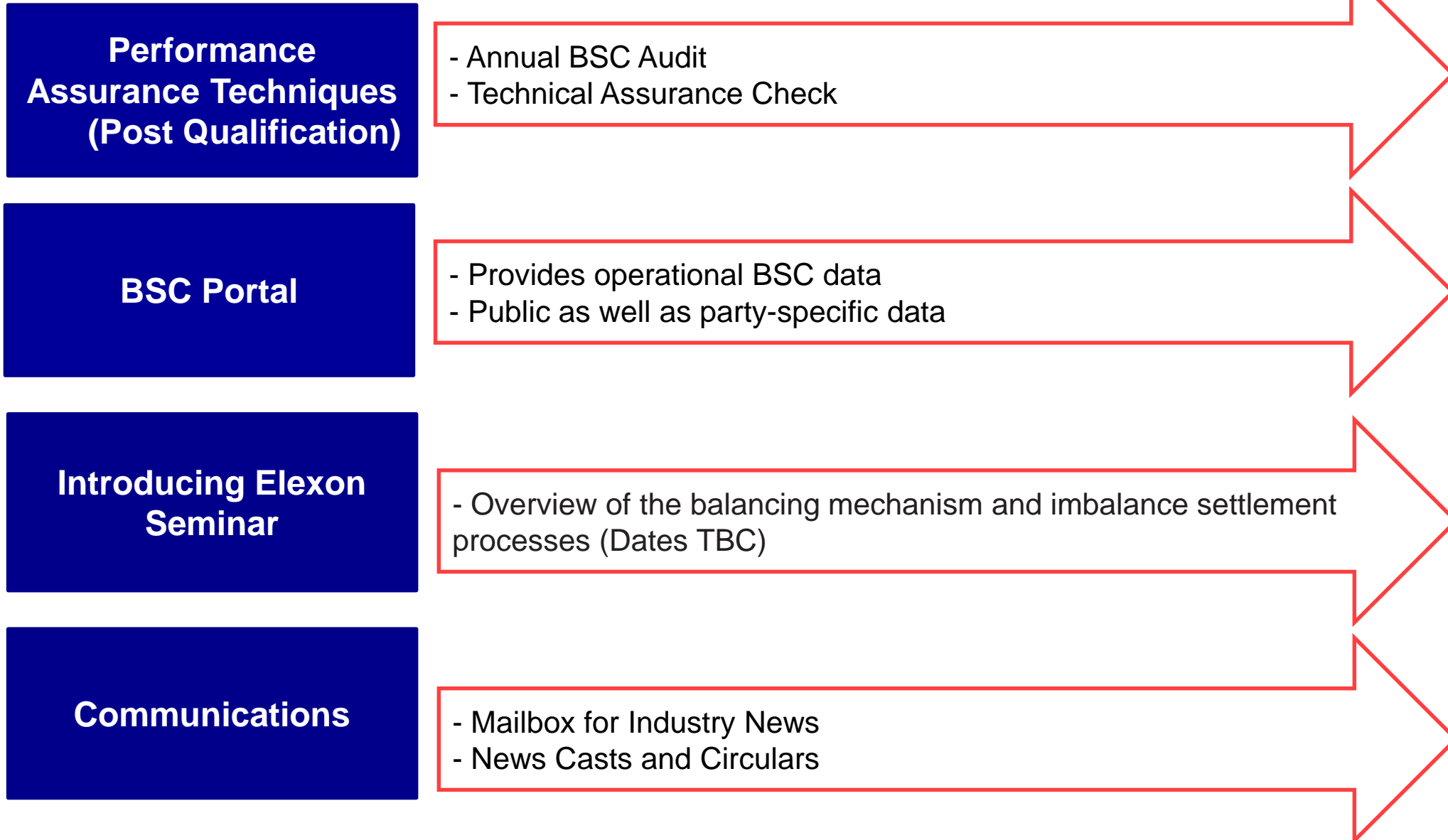


## PAB approval and timelines



PAB Dates	Meeting Number
28/01/2021	240
25/02/2021	241
25/03/2021	242
29/04/2021	243
27/05/2021	244
24/06/2021	245
29/07/2021	246
26/08/2021	247
30/09/2021	248
28/10/2021	249
25/11/2021	250
16/12/2021	251

## Additional Information



## Contact details and links

Market Entry:

<https://www.elexon.co.uk/reference/market-entry/>

SVA Qualification:

<https://www.elexon.co.uk/reference/market-entry/sva-qualification/>

TERRE and Wider Access:

<https://www.elexon.co.uk/about/trading-electricity-market/terre-wider-access/>

BSC For Dummies:

<https://www.elexon.co.uk/bsc-and-codes/bsc-guide-how-balancing-and-settlement-works/>

Elexon Kinnect and FAQs:

<https://www.elexon.co.uk/operations-settlement/bsc-central-services/updating-bsc-systems/elexon-kinnect-faqs-and-guidance/>

Contact for Elexon Kinnect Queries:

[PartyMngt@elexon.co.uk](mailto:PartyMngt@elexon.co.uk)

