

Public

P376 'Utilising a Baselining Methodology to set Physical Notifications'

Workgroup 5

10 December 2019

ELEXON

Health & Safety

In case of an emergency

An alarm will sound to alert you. The alarm is tested for fifteen seconds every Wednesday at 9.20am

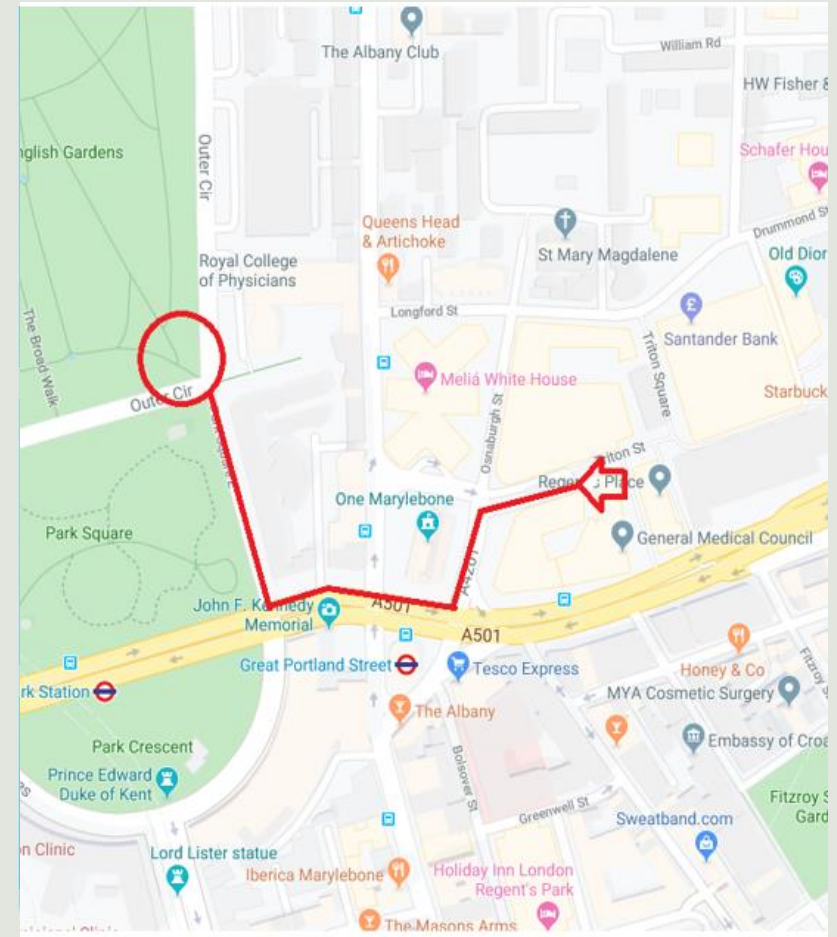
Evacuating 350 Euston Road

- If you discover a fire, operate one of the fire alarms next to the four emergency exits.
- Please do not tackle a fire yourself.
- If you hear the alarm, please leave the building immediately.
- Evacuate by the nearest signposted fire exit and walk to the assembly point.
- Please remain with a member of ELEXON staff and await further instructions from a Fire Warden.
- For visitors unable to use stairs, a Fire Warden will guide you to a refuge point and let the fire brigade know where you are.

When evacuating please remember

- Do not use the lifts.
- Do not re-enter the building until the all clear has been given by the Fire Warden or ground floor security.

Our team on reception is here to help you, if you have any questions, please do ask them.



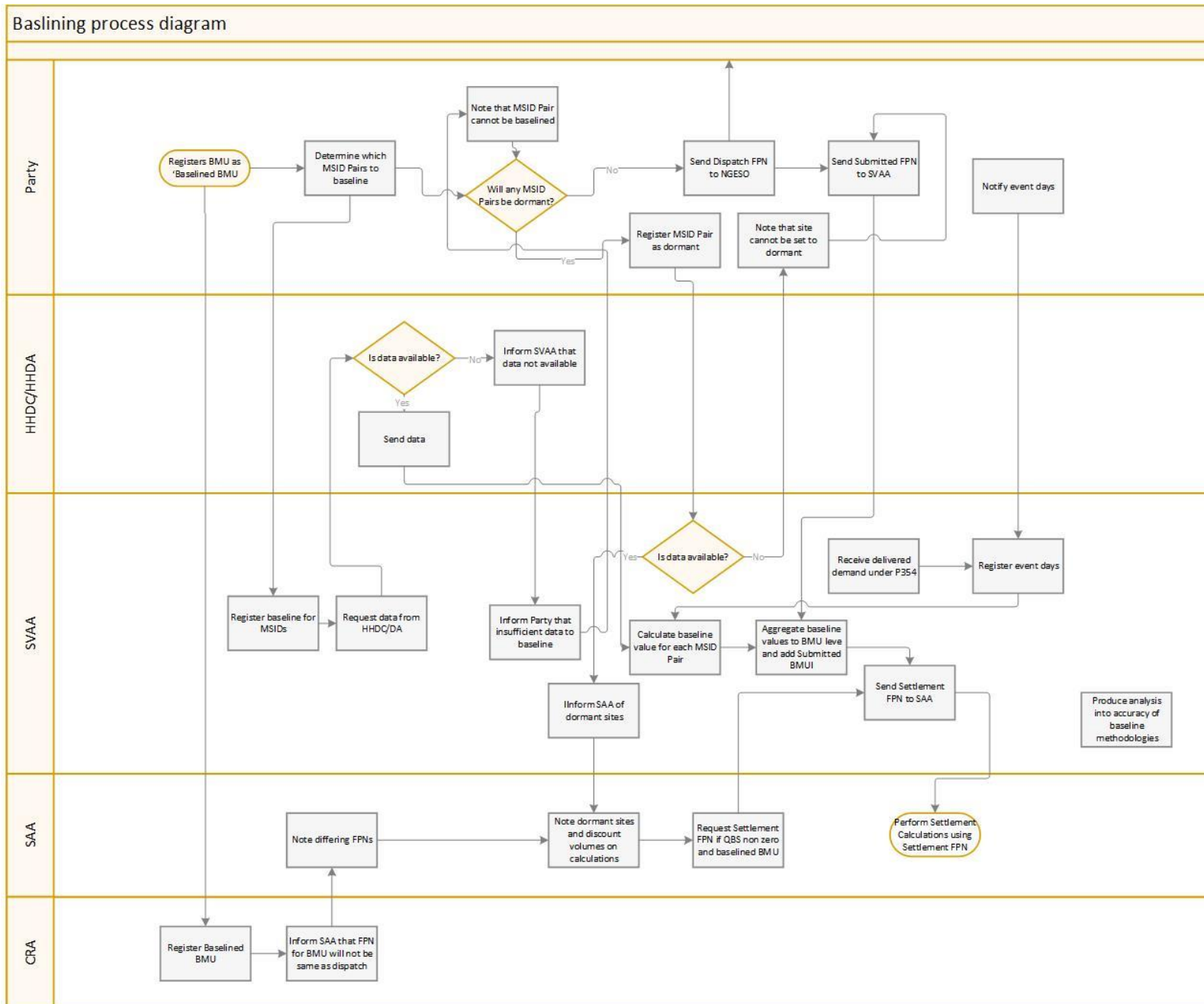
Agenda

- Welcome and Housekeeping
- Walkthrough and agreement of Business Requirements
- Consideration of baseline analysis on GB data
- Initial Consideration of structure of Baseline Methodology Document
- Review of Progress against Terms of Reference
- A.O.B and next steps



Walkthrough of Business Requirements

High level process map





**Overview of
analysis into
suitability of
baselines on GB
data**

Background

10 in 10

- Looks back at data and selects the 10 most recent suitable non-event days.
- Averages data to create baseline on a SP basis.

4 in 5


- Looks back at data and selects 5 most recent suitable days.
- Disregards the lowest overall metered volume day.
- Averages remaining 4 days to create a baseline on a SP basis.

Middle 4 of 6

- Looks back at data and selects 6 most recent suitable days.
- Disregards highest and lowest overall Metered volume days.
- Averages remaining 4 days to create a baseline on a SP basis.

- Additive adjustment based on comparison of baselined and actual volumes over 60-240 minutes prior to delivery.





Baseline Methodology Document

Document structure

1. Introduction
 - Overview of who, what, why

2. Acronyms and definitions
 - Standardised terminology

3. Context
 - Further detail on why document exists and why it will be used

4. Approved baselining techniques
 - Details of the approved Methodologies that parties can choose from

5. Annual review of methodologies
 - Overview of how baseline accuracy will be monitored



Review of ToRs

ToRs

Areas to Consider

How will the Baseline PN be created and by whom?

Can the Baseline Methodology be used for other purposes other than providing the PN for Settlement purposes?

Consider how the new service will be funded? i.e. should only those who benefit from this service pay for the service?

Which Parties will be allowed to use a Baseline Methodology for their PN used in Settlement?

Will there be one Baseline Methodology or will there be different methodologies aligned to Technology type. If so how will this work in practice?

What changes are needed to BSC documents, systems and processes to support P376 and what are the related costs and lead times?

Are there any Alternative Modifications?

Should P376 be progressed as a Self-Governance Modification?

Does P376 better facilitate the Applicable BSC Objectives than the current baseline?



A.O.B.

ELEXON

