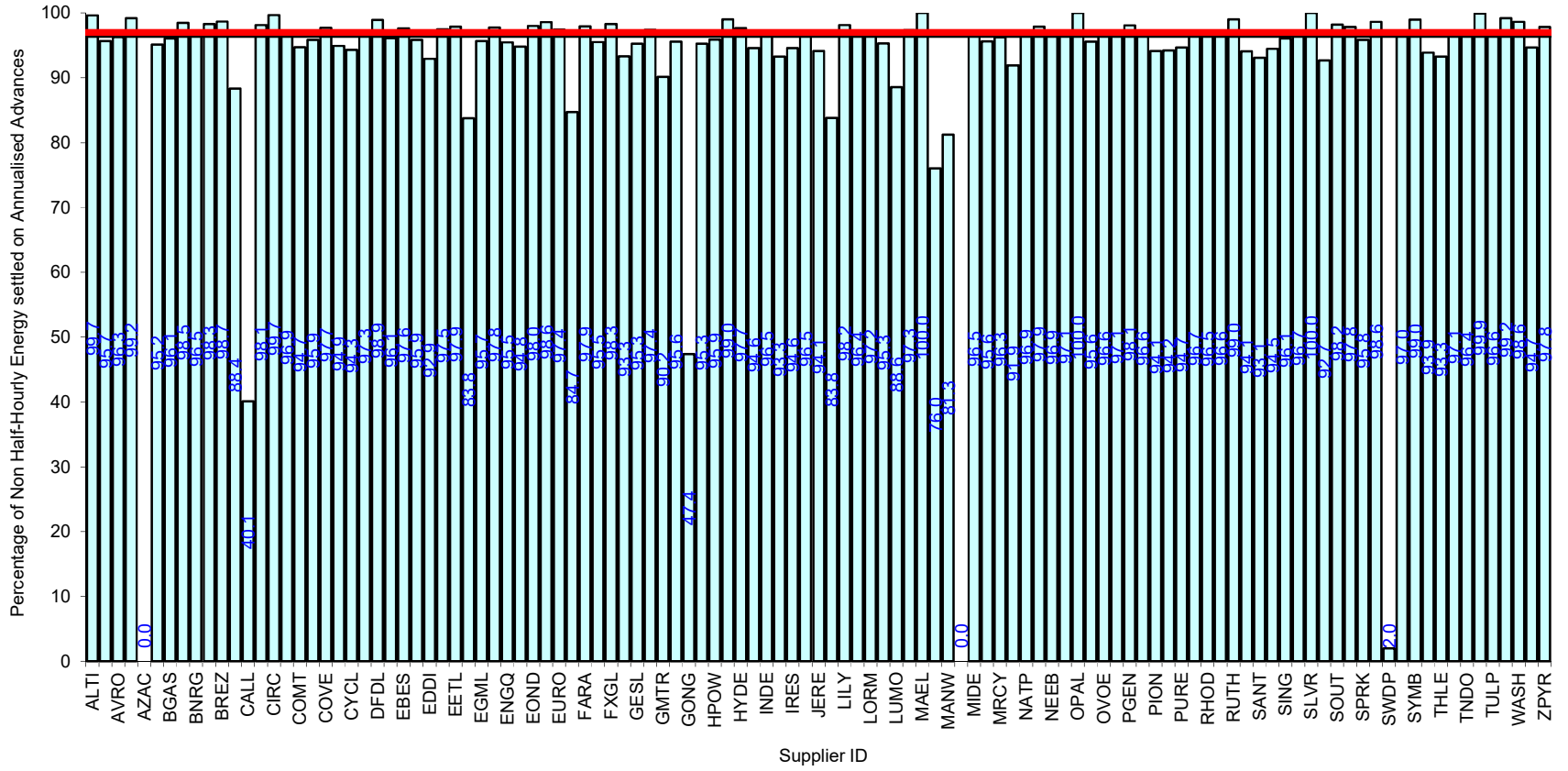
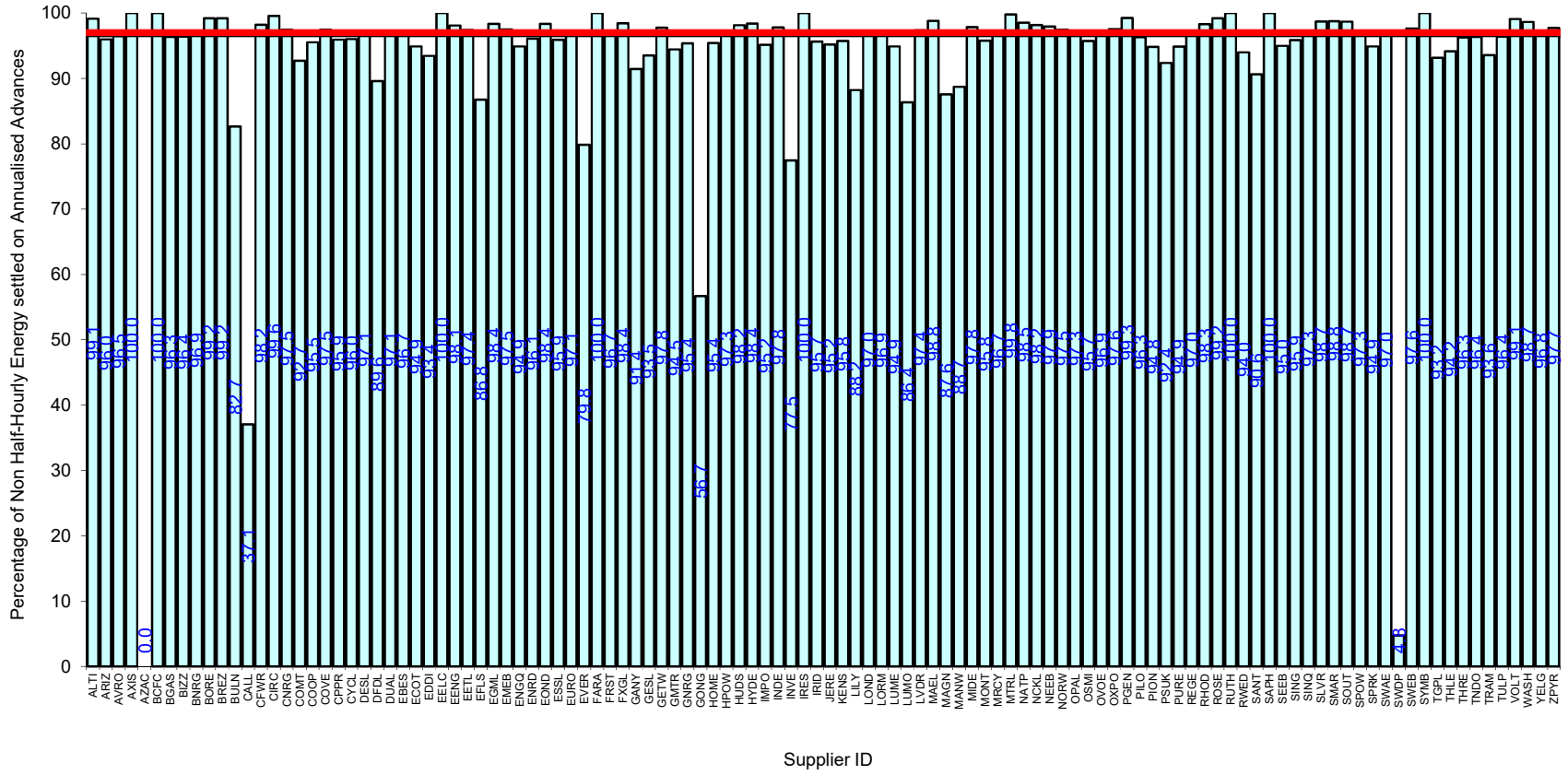


Serial SP08a. GSP Group: Eastern (_A). Reporting Period 1 to 31 January 2020 . Reconciliation Run: RF

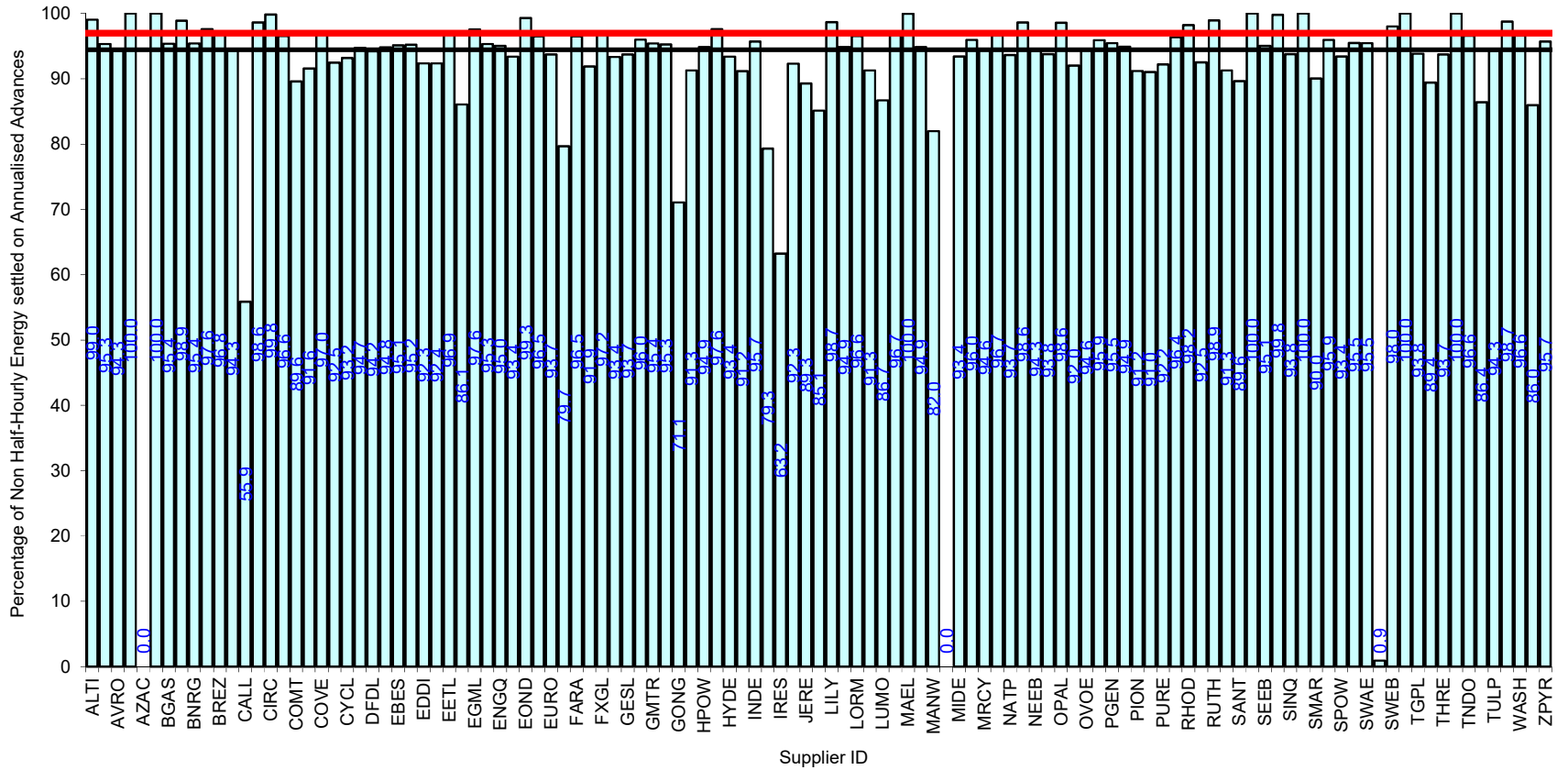


Supplier Performance
 GSP Group Average (96.51%)
 Industry Standard (97%)

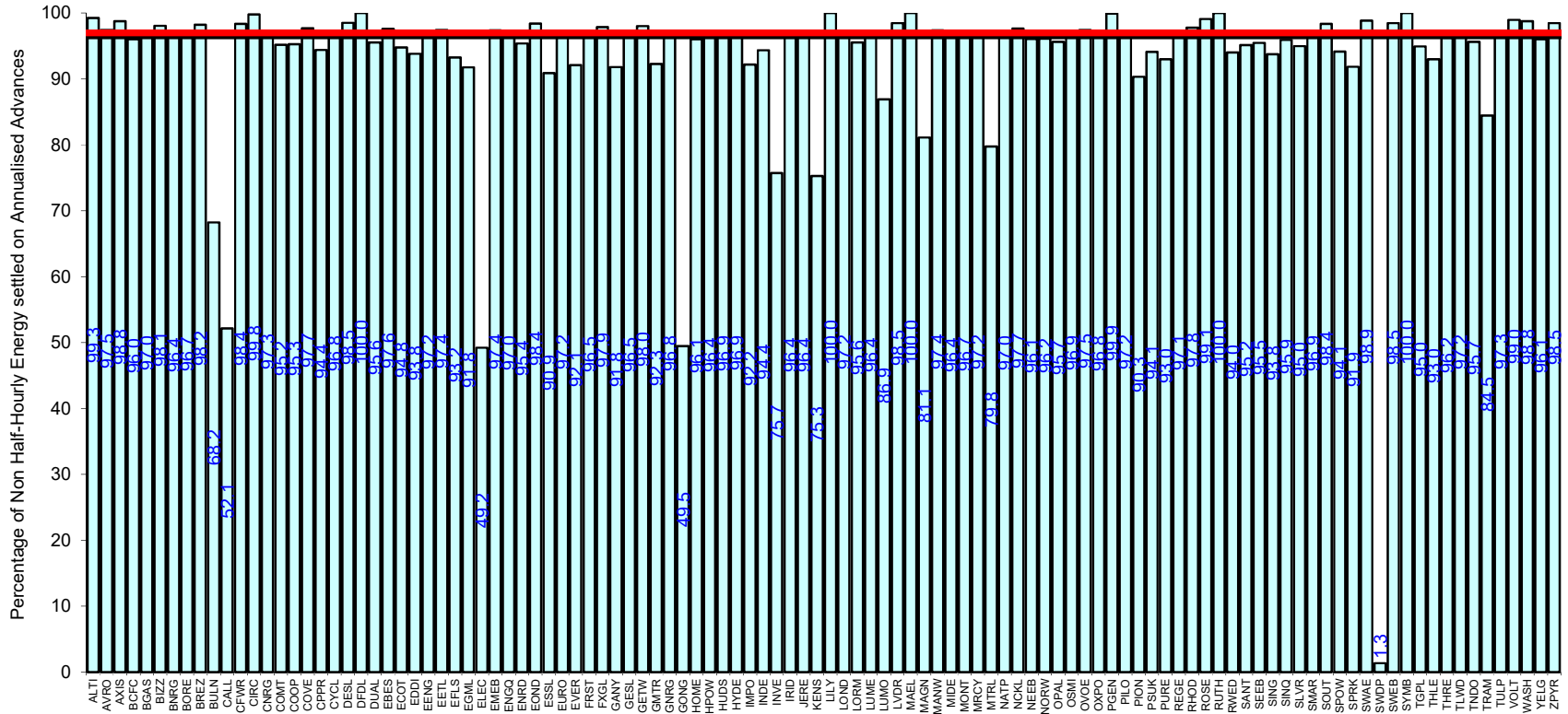
Serial SP08a. GSP Group: East Midlands (_B). Reporting Period 1 to 31 January 2020 . Reconciliation Run: RF



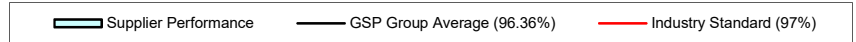
Supplier Performance
 GSP Group Average (96.67%)
 Industry Standard (97%)



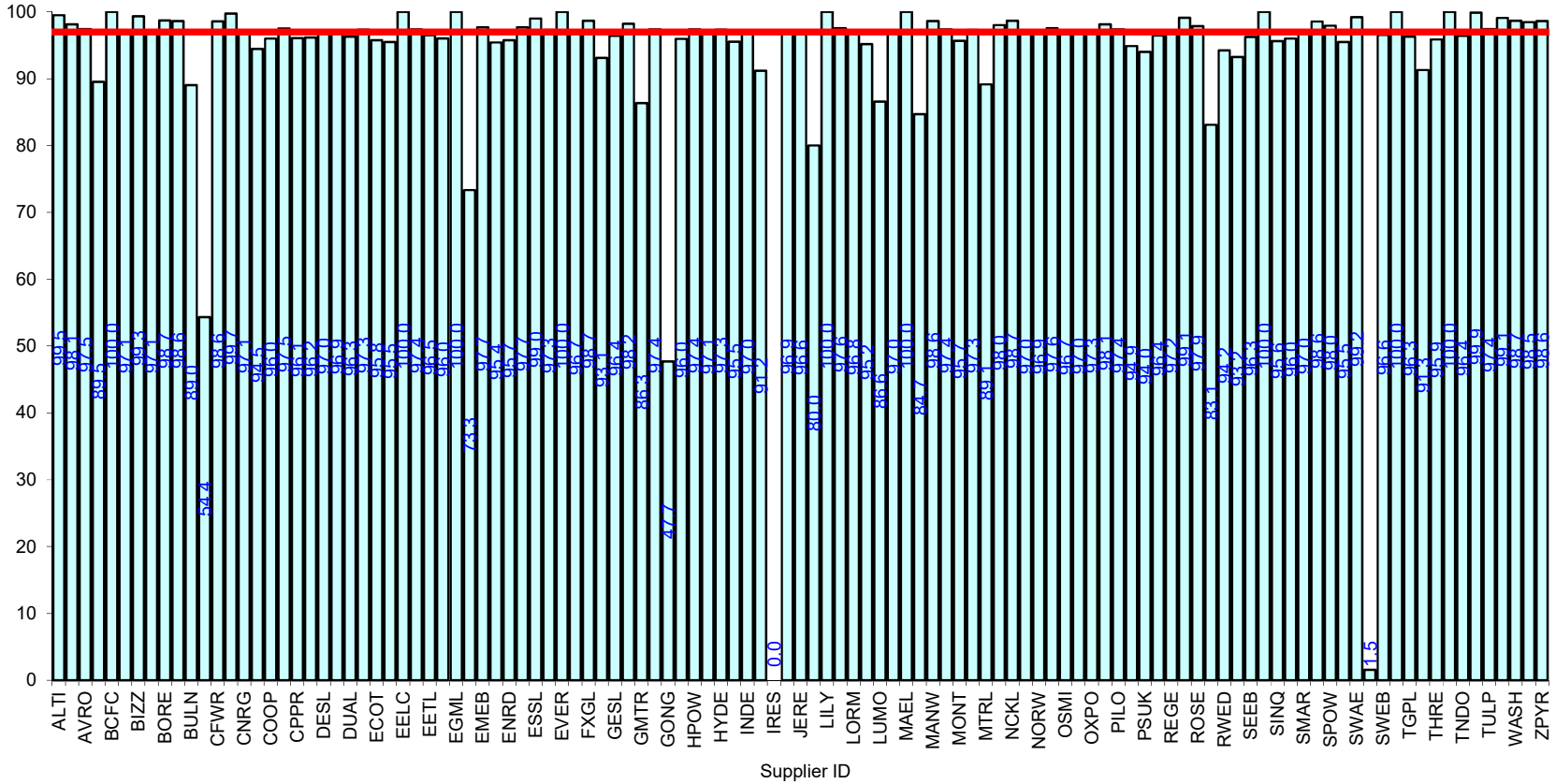
Serial SP08a. GSP Group: Merseyside and North Wales (_D). Reporting Period 1 to 31 January 2020 . Reconciliation Run: RF



Supplier ID



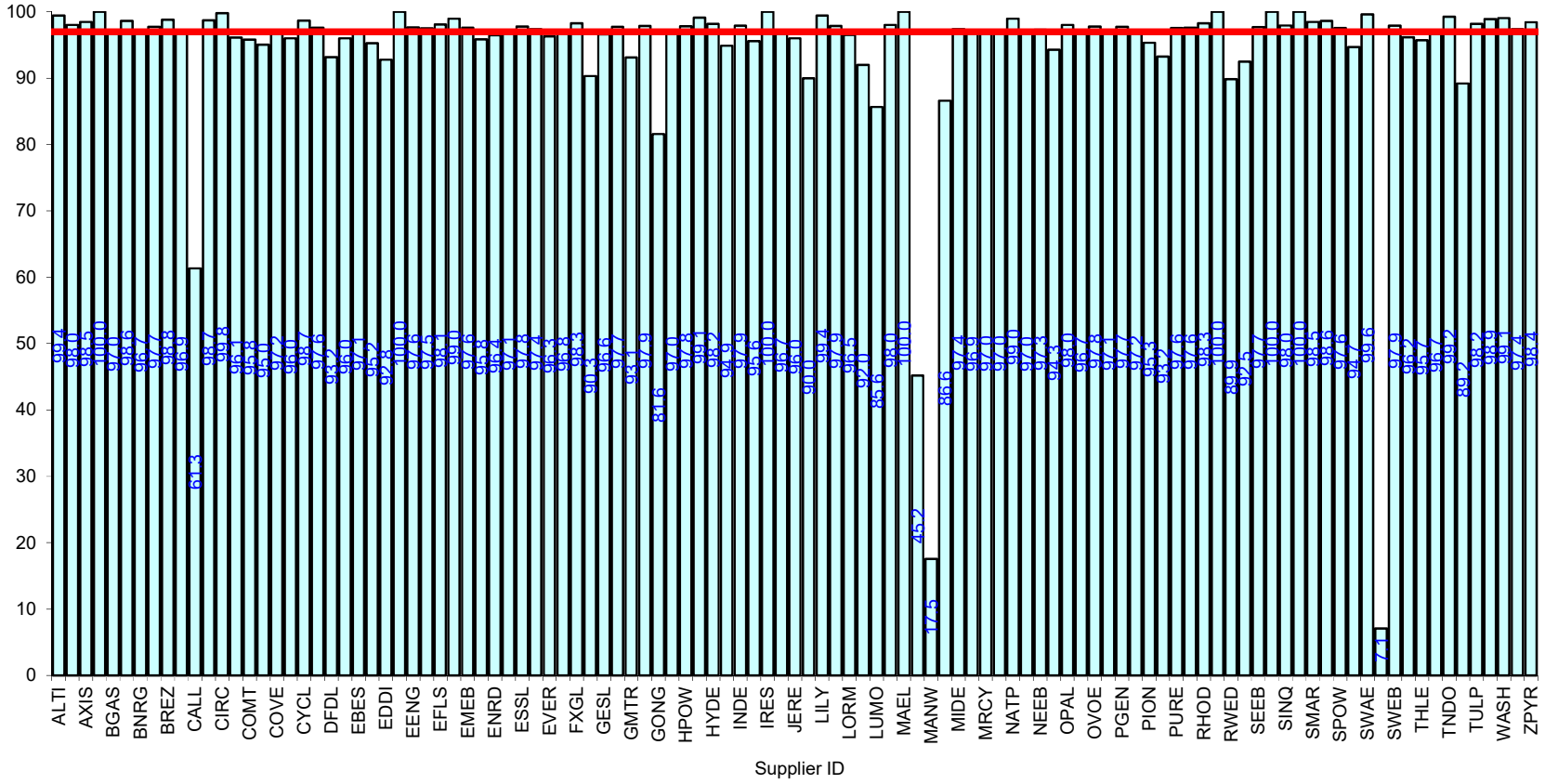
Percentage of Non Half-Hourly Energy settled on Annualised Advances



Supplier ID

Supplier Performance
 GSP Group Average (97.04%)
 Industry Standard (97%)

Percentage of Non Half-Hourly Energy settled on Annualised Advances

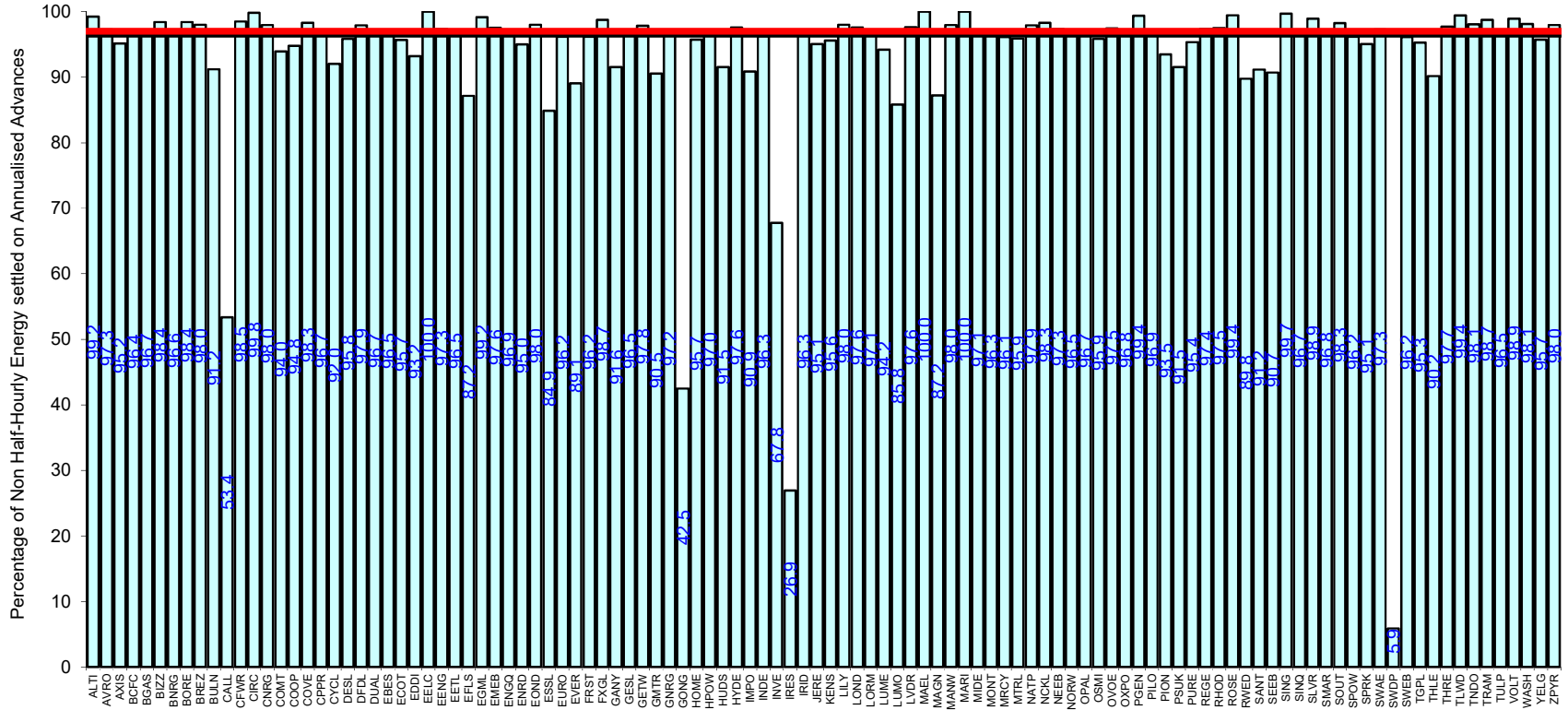


Supplier Performance

 — GSP Group Average (96.91%)

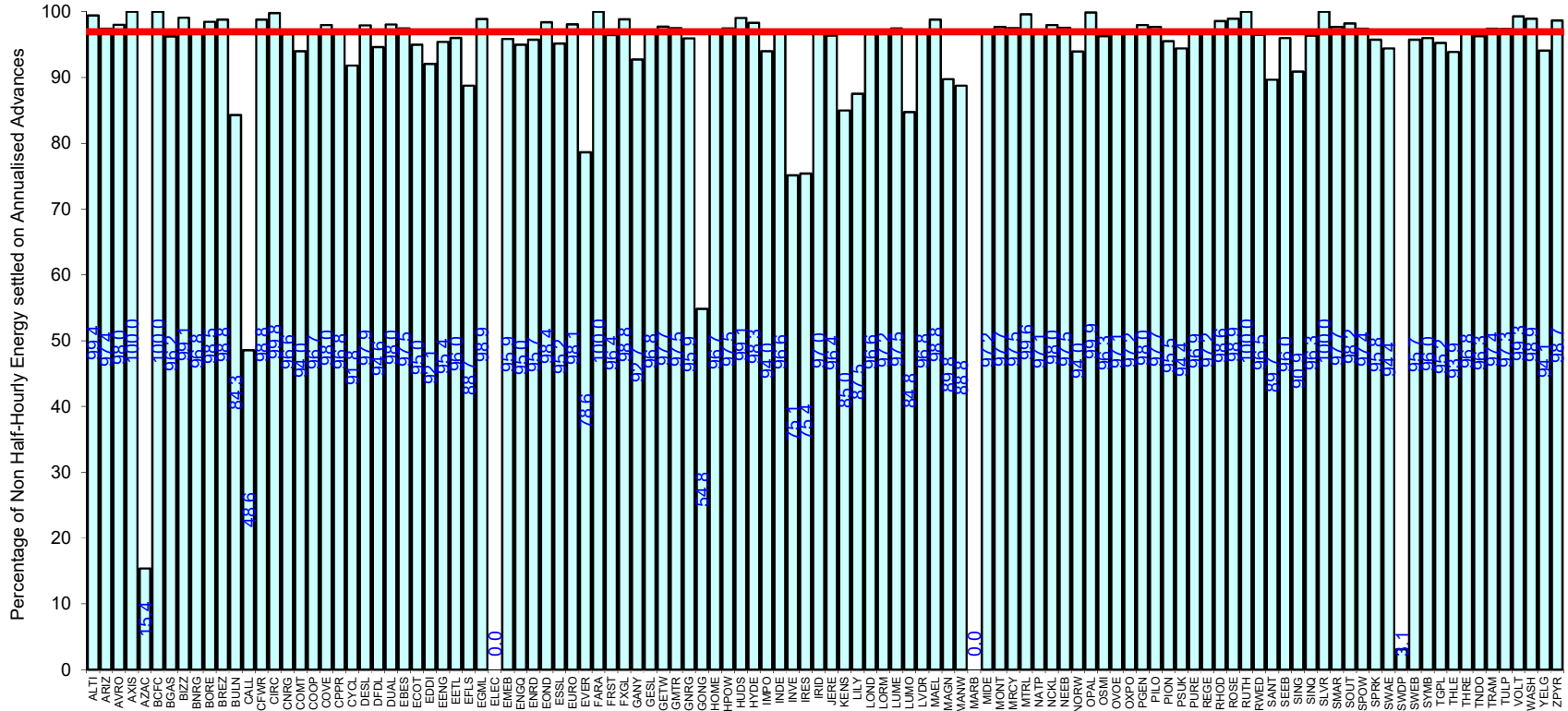
 — Industry Standard (97%)

Serial SP08a. GSP Group: North Western (_G). Reporting Period 1 to 31 January 2020 . Reconciliation Run: RF

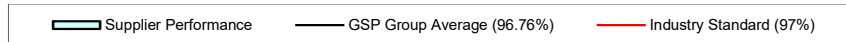


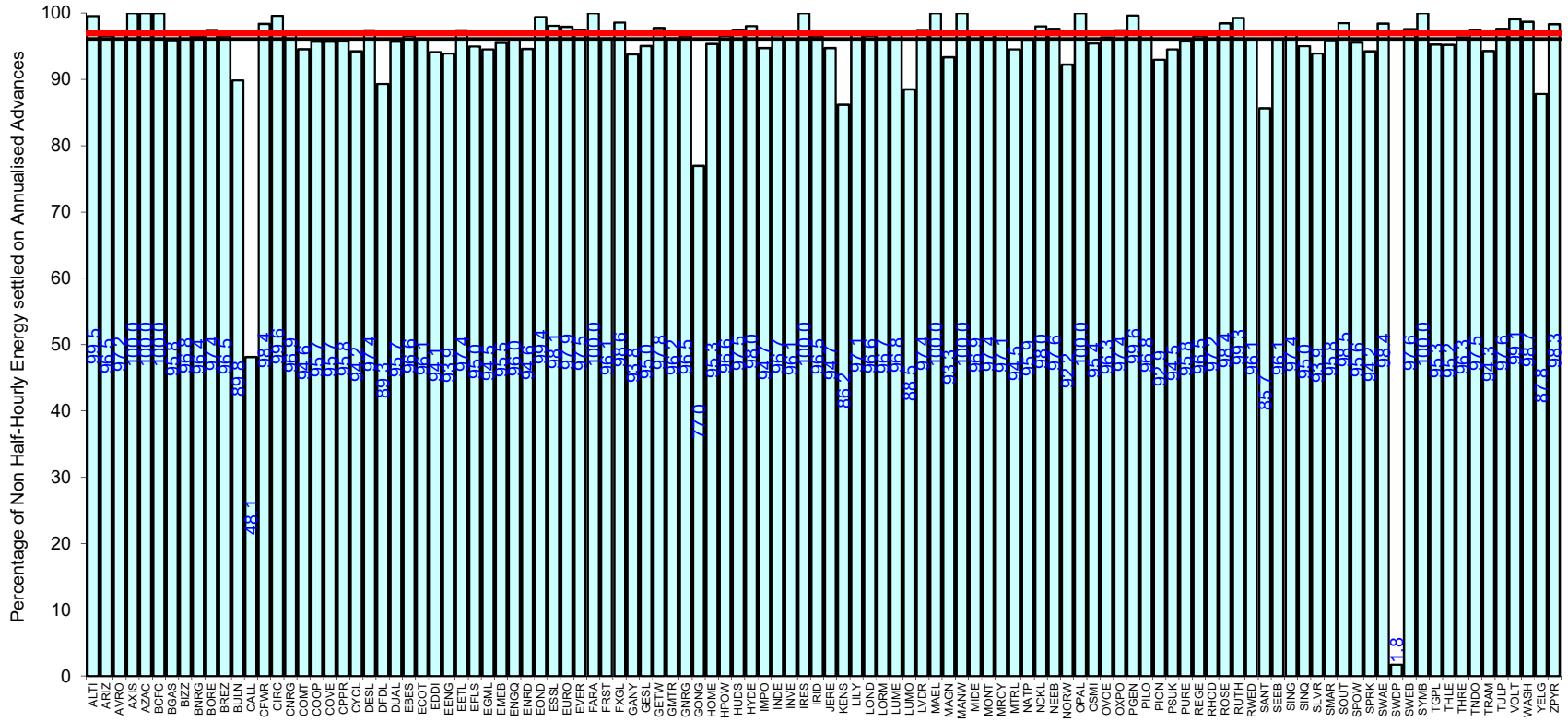
Supplier ID



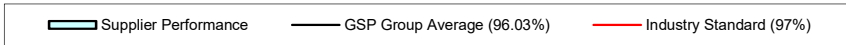


Supplier ID

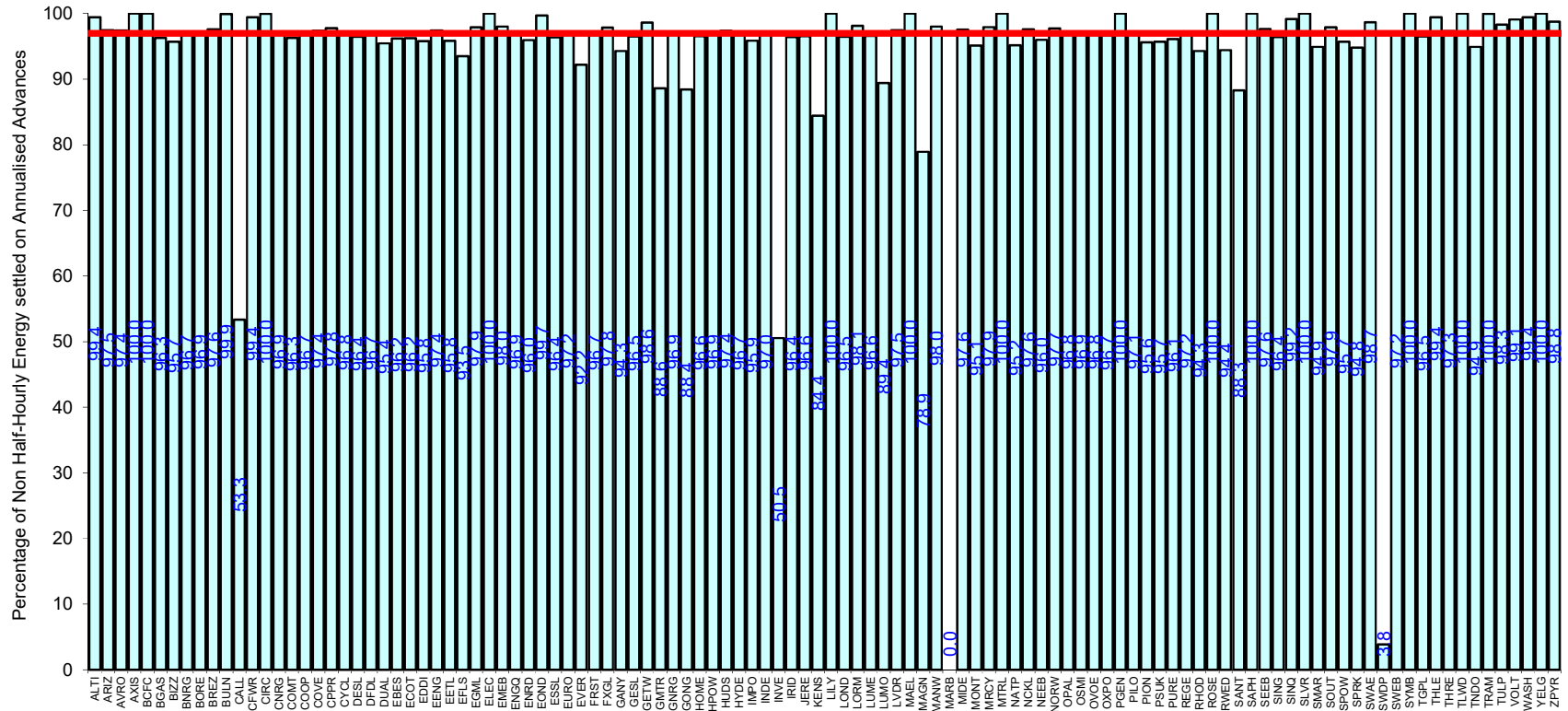




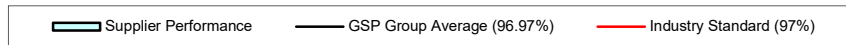
Supplier ID



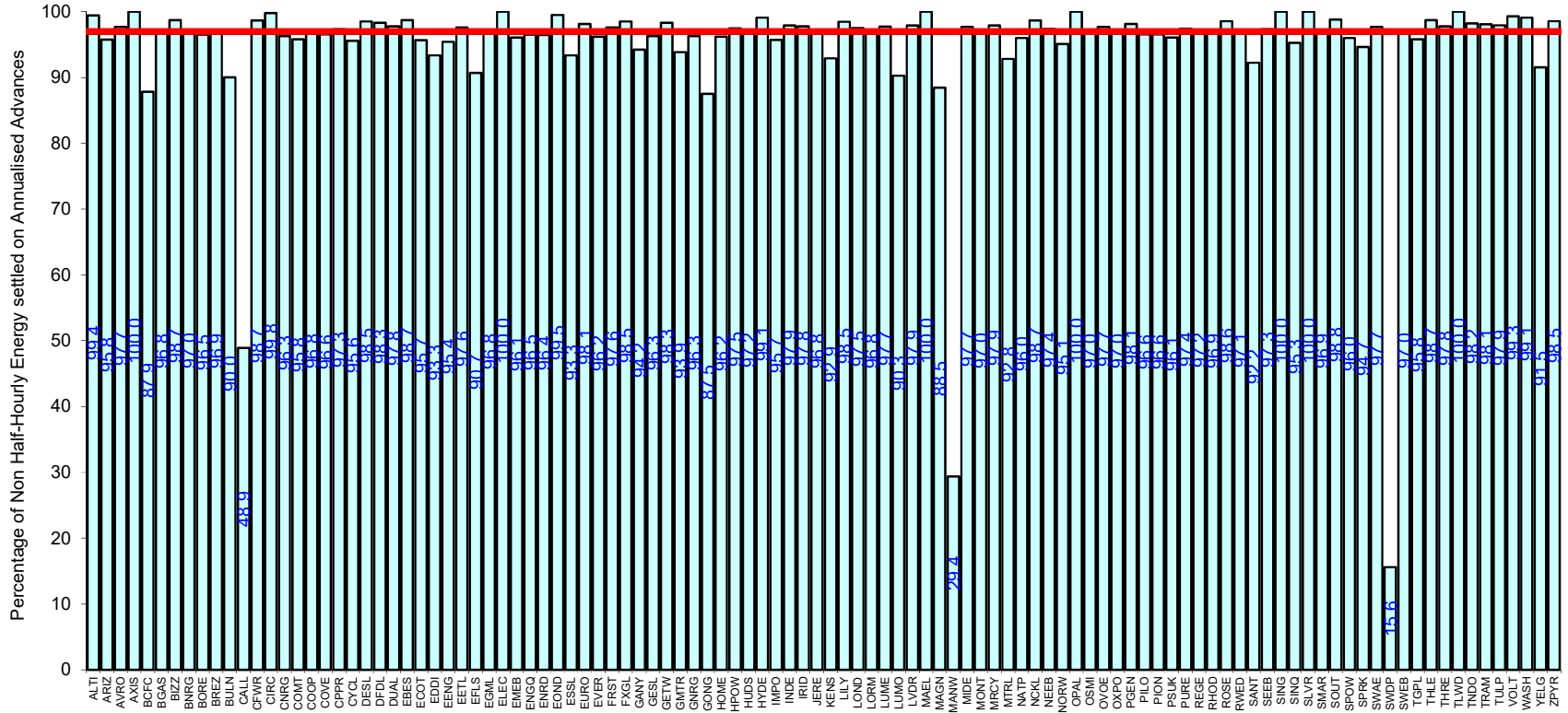
Serial SP08a. GSP Group: South Wales (_K). Reporting Period 1 to 31 January 2020 . Reconciliation Run: RF



Supplier ID



Serial SP08a. GSP Group: South Western (_L). Reporting Period 1 to 31 January 2020 . Reconciliation Run: RF



Supplier ID

