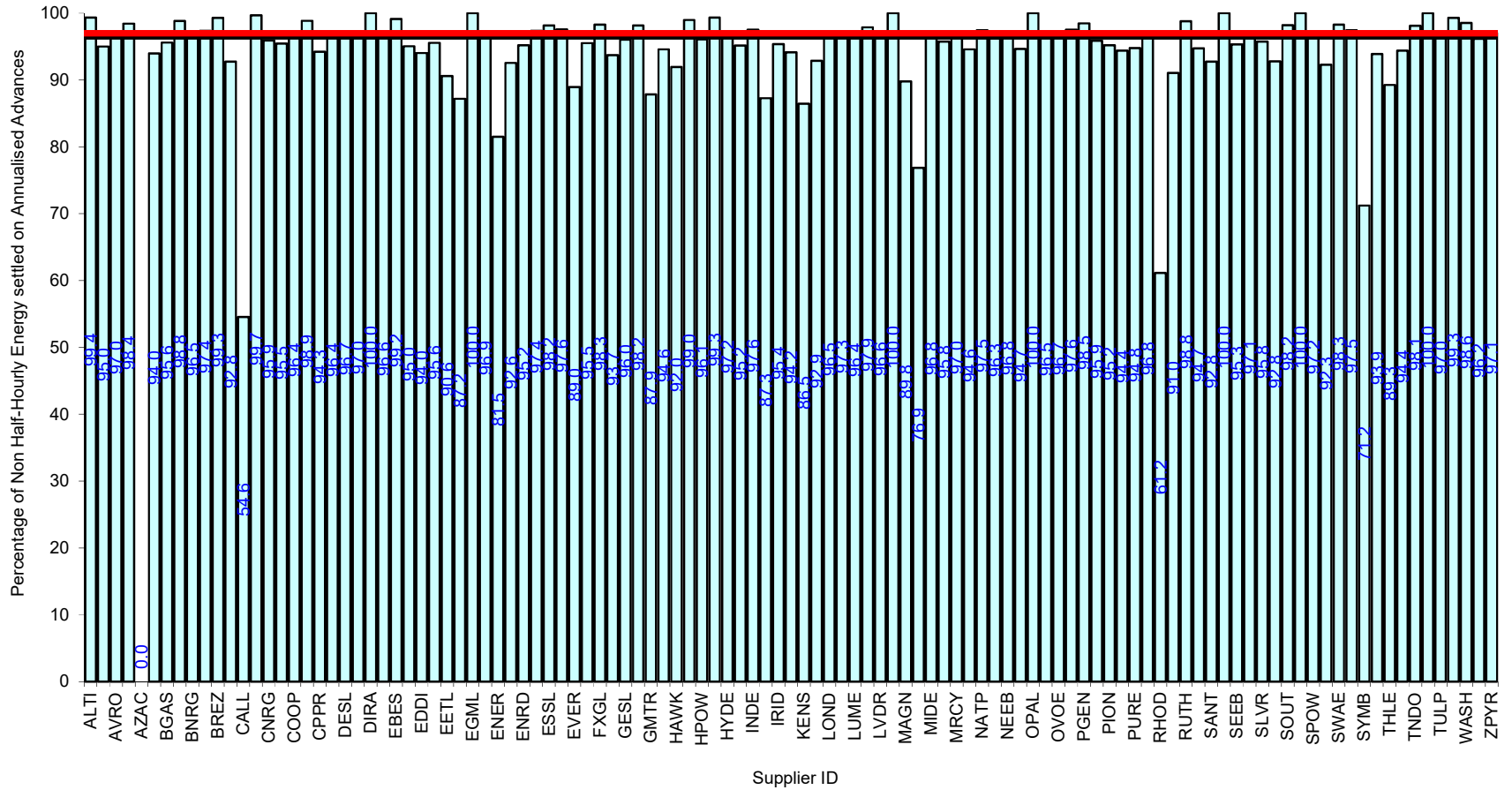
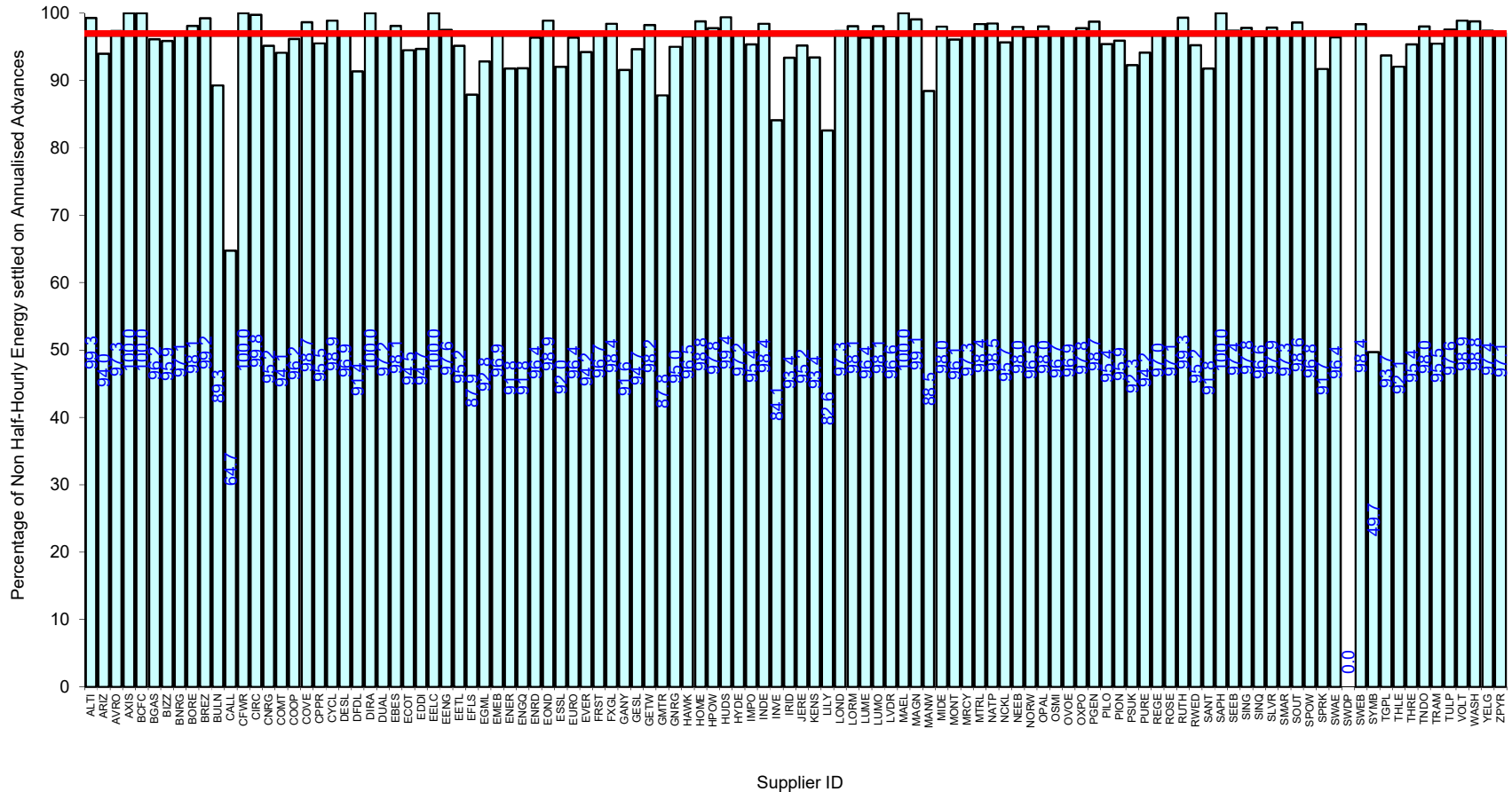


Serial SP08a. GSP Group: Eastern (_A). Reporting Period 1 to 31 May 2020 . Reconciliation Run: RF



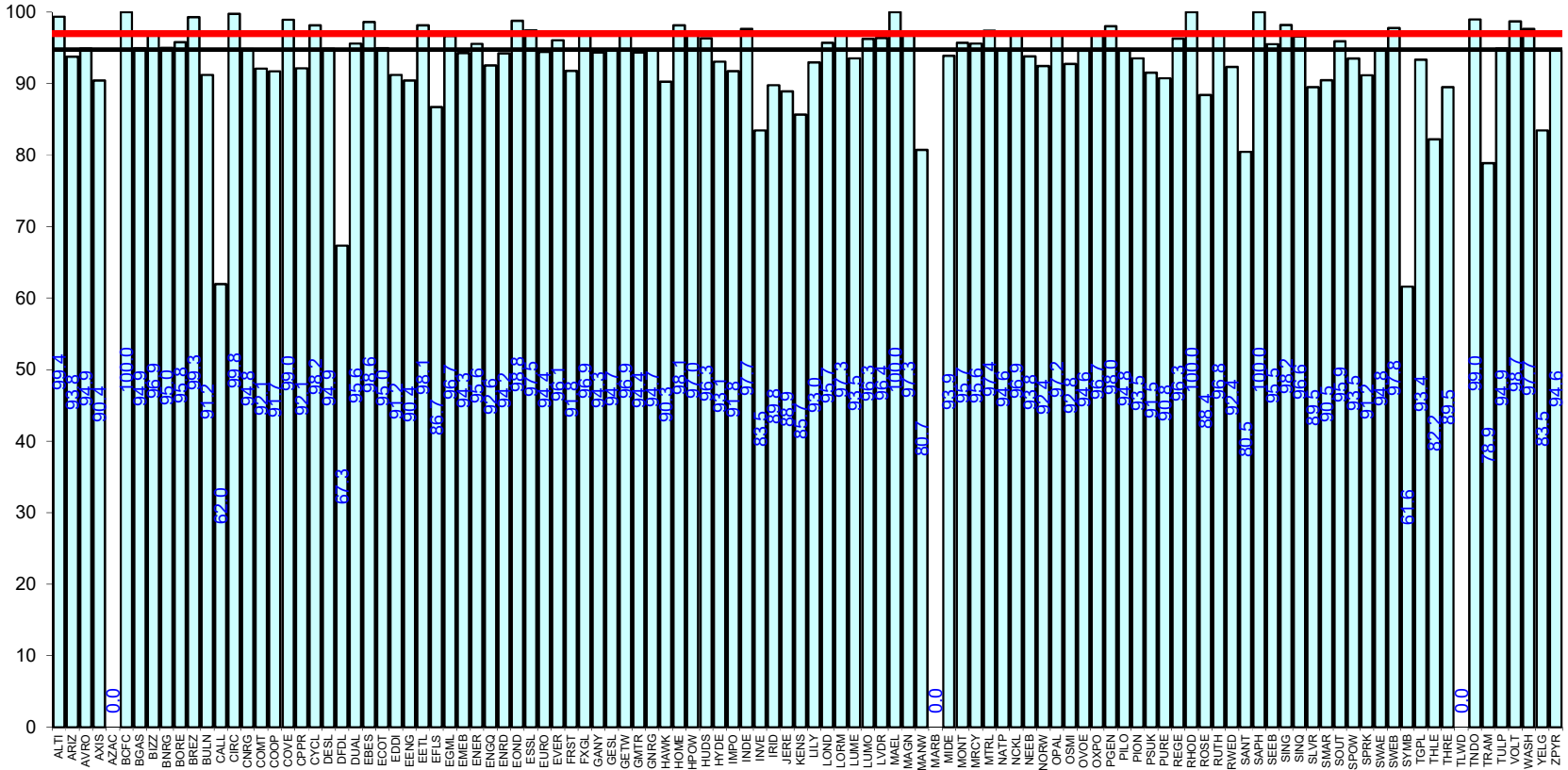
Supplier Performance
 GSP Group Average (96.39%)
 Industry Standard (97%)

Serial SP08a. GSP Group: East Midlands (_B). Reporting Period 1 to 31 May 2020 . Reconciliation Run: RF



Supplier Performance
 GSP Group Average (96.83%)
 Industry Standard (97%)

Percentage of Non Half-Hourly Energy settled on Annualised Advances

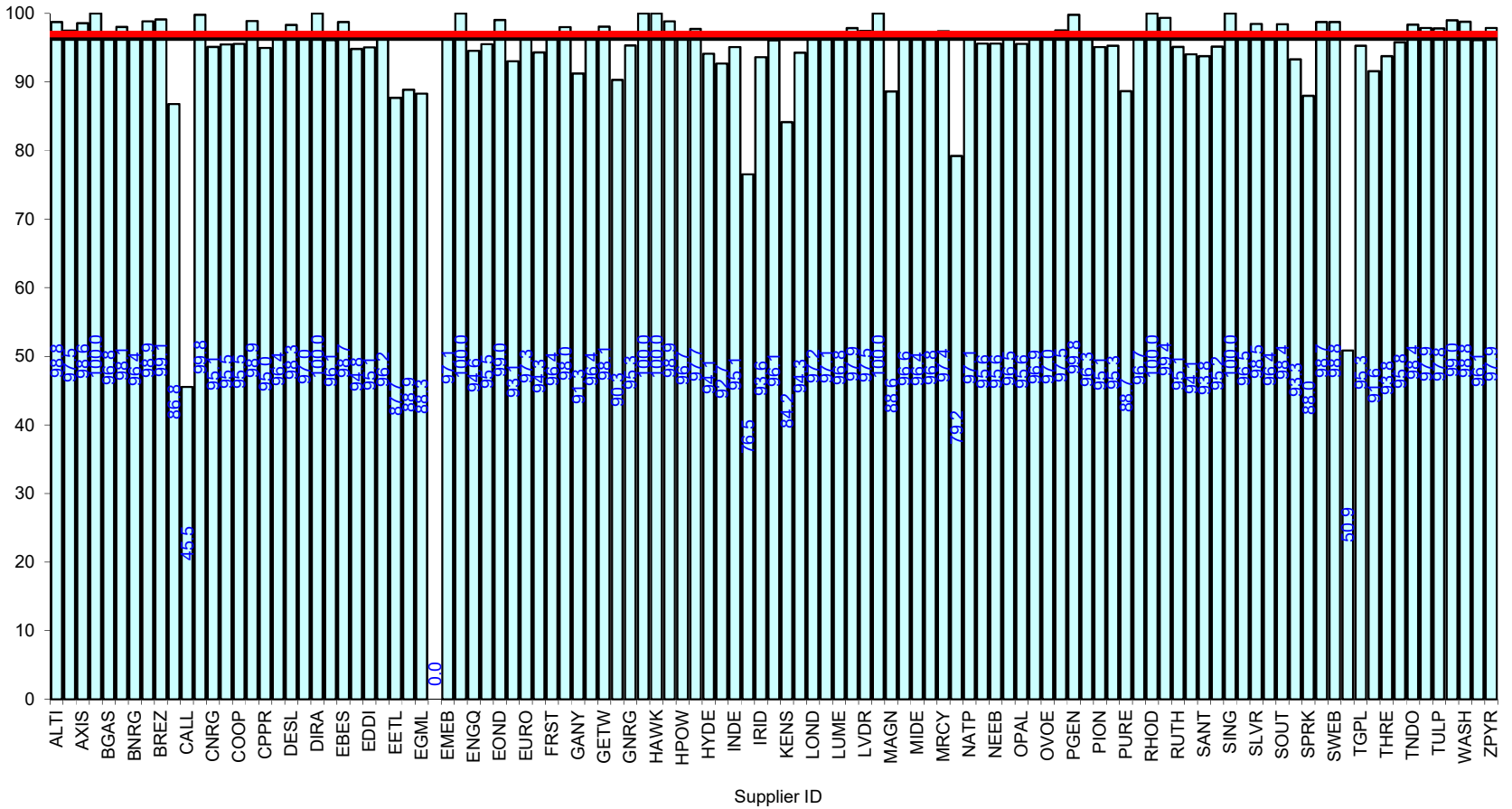


Supplier ID



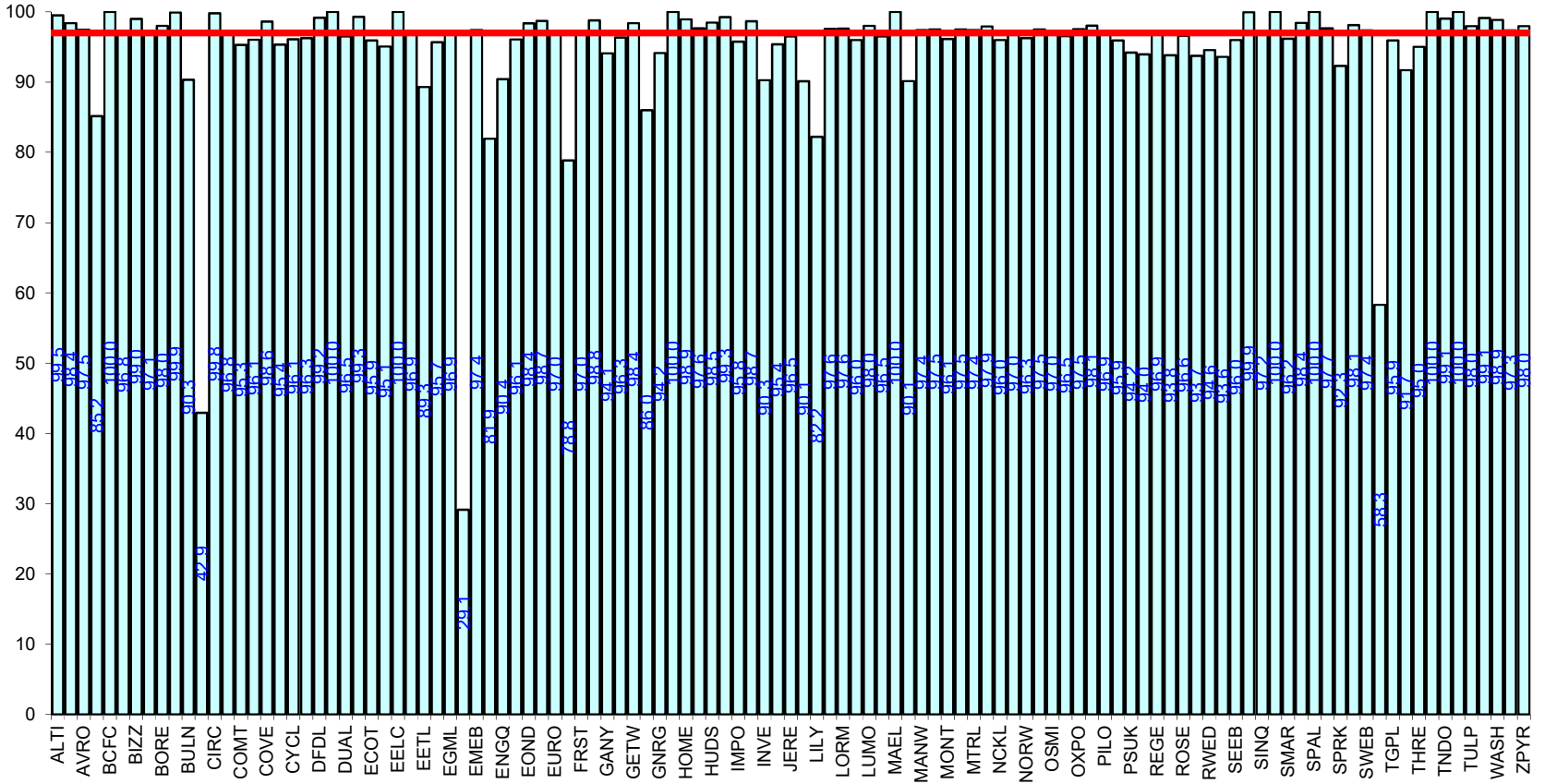
Serial SP08a. GSP Group: Merseyside and North Wales (_D). Reporting Period 1 to 31 May 2020 . Reconciliation Run: RF

Percentage of Non Half-Hourly Energy settled on Annualised Advances



█ Supplier Performance
 — GSP Group Average (96.31%)
 — Industry Standard (97%)

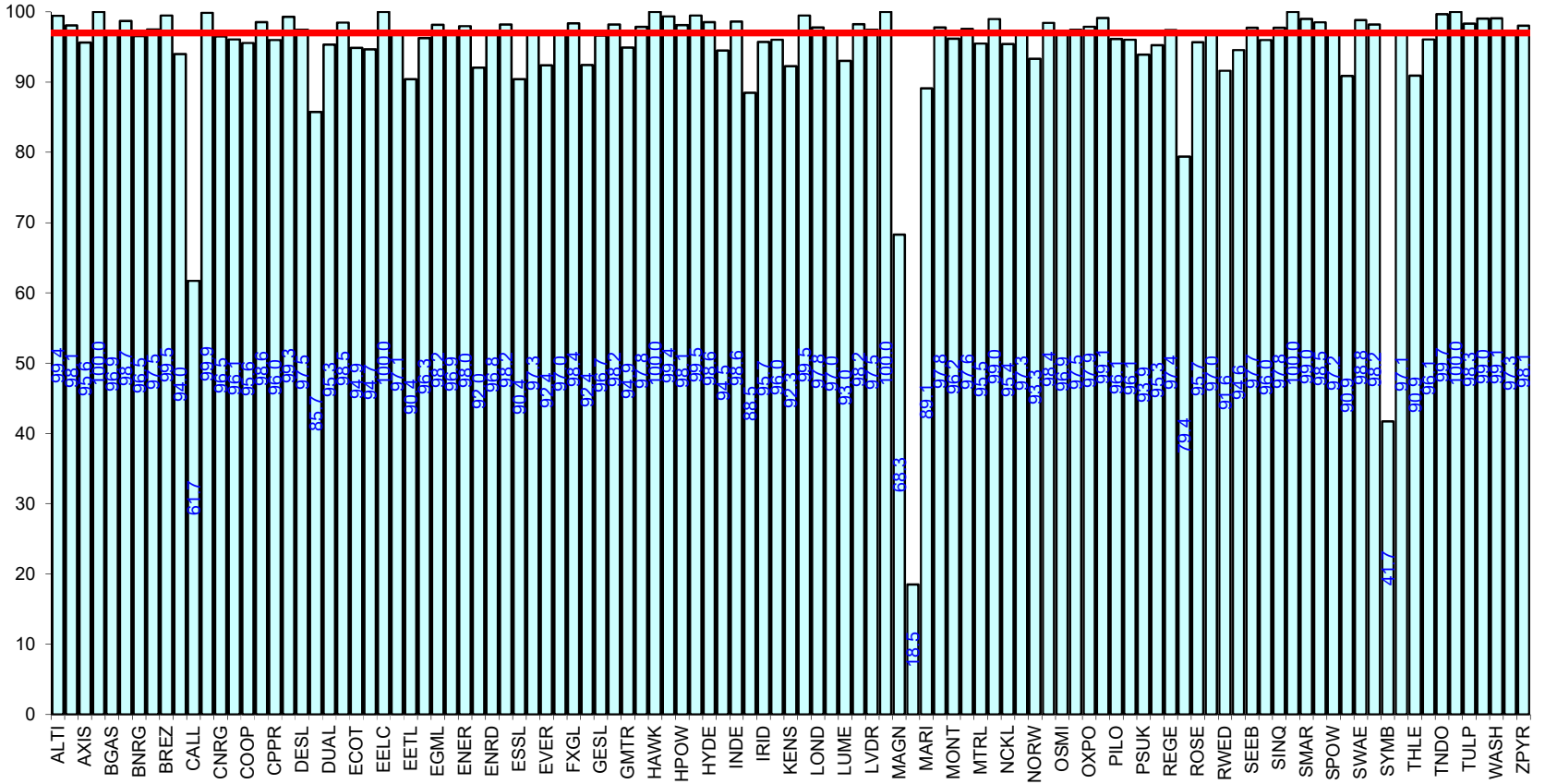
Percentage of Non Half-Hourly Energy settled on Annualised Advances



Supplier ID



Percentage of Non Half-Hourly Energy settled on Annualised Advances



Supplier ID



