

Public

# Update on Workgroup progress

---

17 July 2018  
Mark De Souza-Wilson

**ELEXON**

---

# Meeting dates

---

Workgroup	Last meeting	Next meeting
WG1 – Metering, Meter Reading & Retrieval	6 July	1 August
WG2 – Processing, Load Shaping & Reg. Interaction	25 June	18 July
WG3 – SP-level UMS & LDSO interaction	-	24 July
WG4 – Aggregation, Volume Allocation & Reg. Interaction	26 June	25 July

---

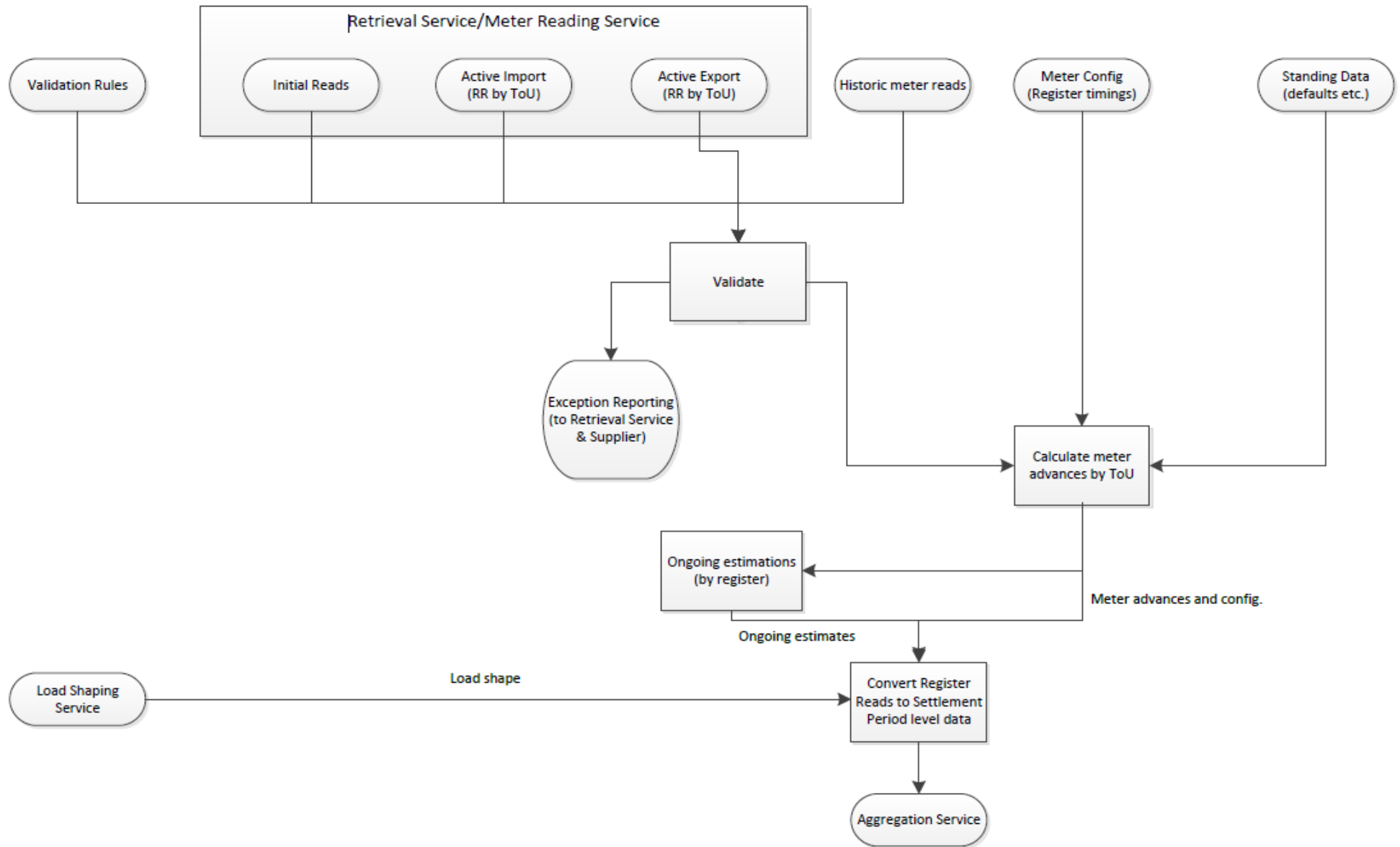
# Common Approach

---

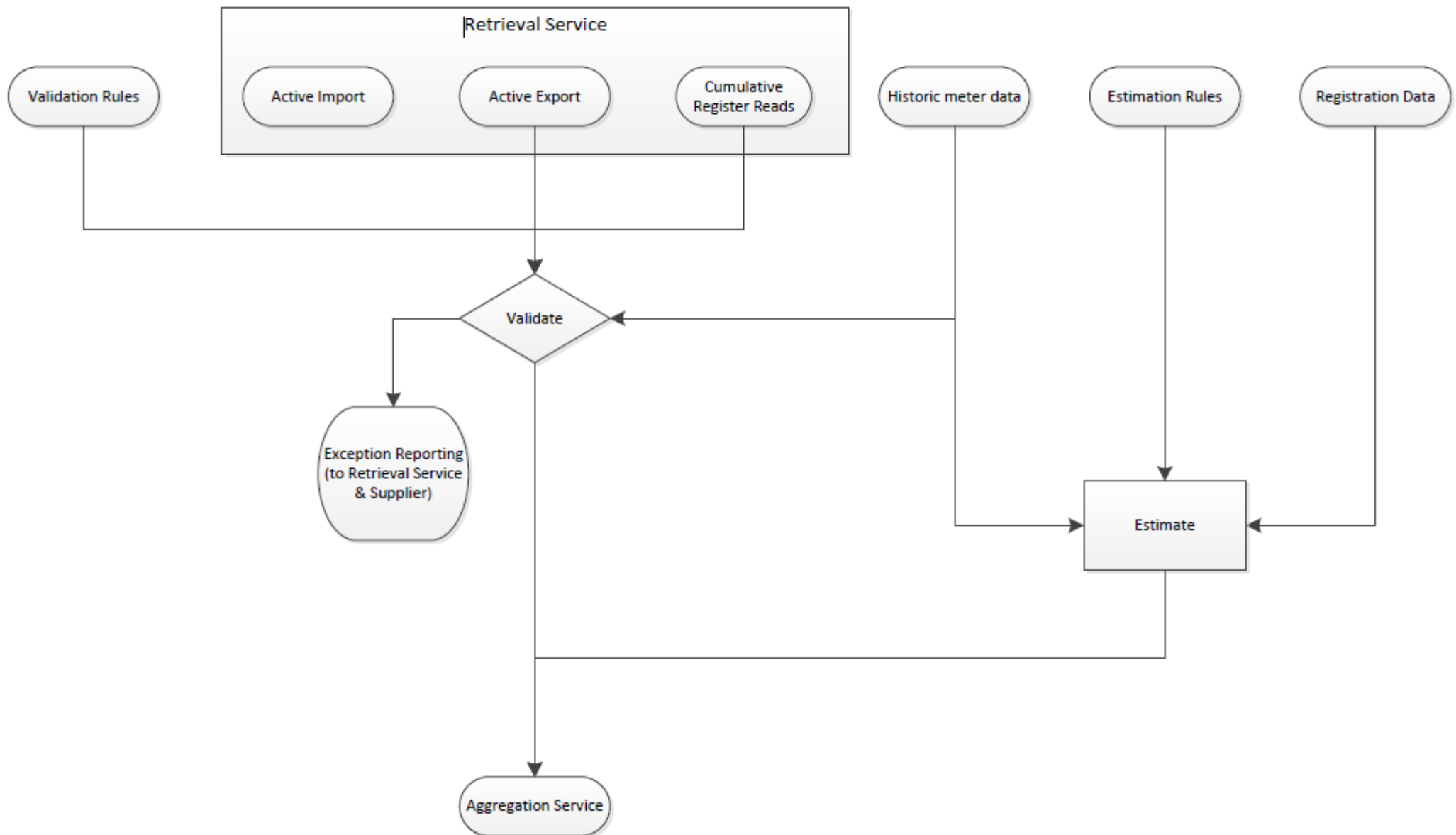
- Started off considering strawman diagrams provided by ELEXON
- Considered the inputs and outputs of each service
- Brainstormed the processes in each service, with some initial thoughts on how these might work
- Agreed some “baseline principles” to guide the design of the services
- Agreed actions for workgroup members to develop draft processes in the weeks before the next workgroup meetings.



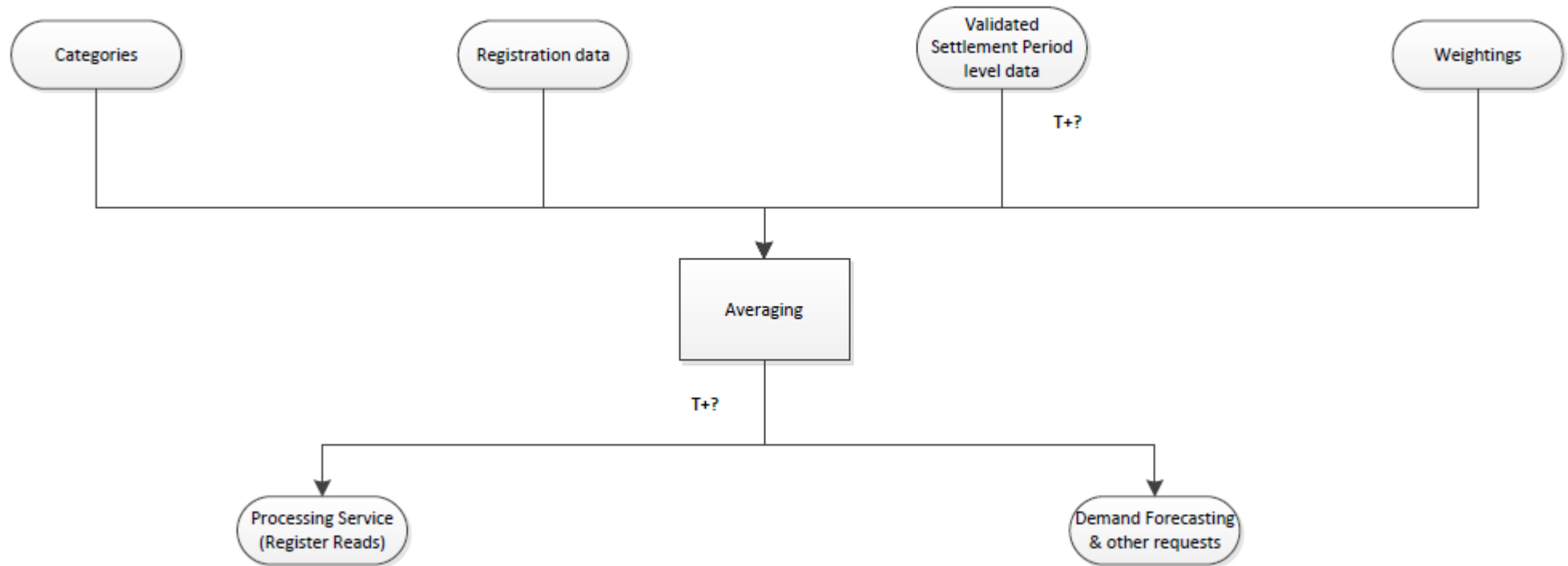
# WG2 – Processing Service (Smart RR)



# WG2 – Processing Service (Advanced)



# WG2 – Load Shaping Service



---

## WG2 – Load Shaping baseline principles

---

- Load shapes to be based on actual SP level data for each day.
- Design flexibly for the worst case scenario ie. millions of Meters settled on register reads.
- Load shape to be super customer shape ie. No modelling for load switching.
- Normalisation will be based on 'area under the load shape' - no GAACs or AFYCs.
- Time of Use configurations will be taken direct from the smart meters ie. No SSCs.



---

## WG2 – current work areas

---

- Investigate options for load shaping
- Review Validation & Estimation process detail
- Confirm details of relevant information available from smart meters

---

## WG4 – considerations for Aggregation Service

---

- Use of registration data
- Requirement of Measurement Classes or Consumption Component Classes
- Categorisations for aggregation
- Defaulting processes for missing data
- Reporting requirements
- Standing data requirements
- How innovation can be facilitated
- Application of line losses

---

## WG4 – considerations for Volume Allocation Service

---

- Data marshalling requirements
- Requirements for data validation
- Defaulting processes for missing data
- GSP group correction
- Allocation of export spill
- Required outputs for Settlement
- Reporting and aggregation requirements for network charging, EMR, disconnection events etc.

---

## WG4 – current work areas

---

- Settlement timetable.
- User Requirements Specifications for Aggregation & Volume Allocation
- Interaction with Targeted Charging Review

---

## WG1 – considerations for Metering Service (Smart)

---

- Data handling eg. Meter serial number , address, WC/CT etc.
- Installing/removing meter & associated communications
- Energise/de-energise
- Investigations and accuracy testing
- Communications faults and data recovery
- Interactions with Supplier, DCC, Processing Service
- Differences from current MOP role

---

# WG1 – considerations for Meter Reading Service

---

- Meter reads
- Meter tampering and faults
- Safety checks

---

## WG1 – considerations for Retrieval Service

---

- Timing and nature of meter reads should be provided by the Processing Service
- Retrieval Service holds keys for smart meters
- Retrieval Service does little more than requesting meter reads when required by the Processing Service, so would likely be combined with another service if it is not centralised

---

# Summary

---

- Workgroup 2 – Design for Processing Service can be loosely guided by a review of HHDC processes. Load Shaping Service is completely new and will be designed to reduce settlement timescale whilst improving accuracy and efficiency compared to the current process.
- Workgroup 4 – Few significant changes identified. Assume CCCs and scaling weights kept and rationalise if possible. Aggregation service should be able to aggregate data for a defined list of MSIDs. Settlement timetable 6 to 9 months with initial run circa 10 WD. Need to consider EMR requirements and new network charging requirements.
- Workgroup 1 – Meter Reading Service is a very simple service and can have draft requirements agreed by 16 July. Metering Service wouldn't change significantly from the status quo. Retrieval Service is completely new so need to look closer at what processes the service will perform and how this might work with the Processing Service.