

Calculate Trading Charges:






Trading Charges

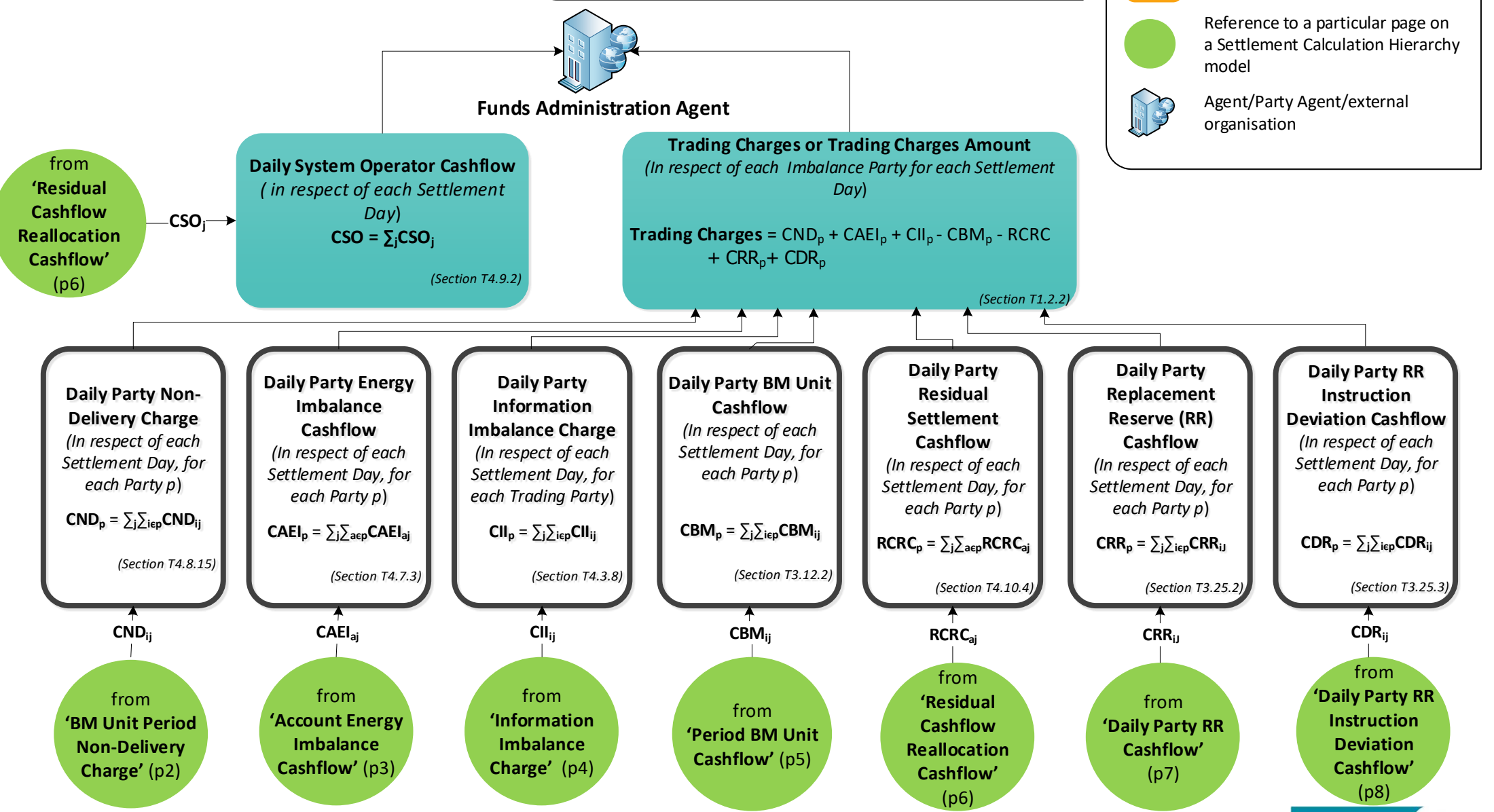
(Page 1 of 12)

Overview / How to read

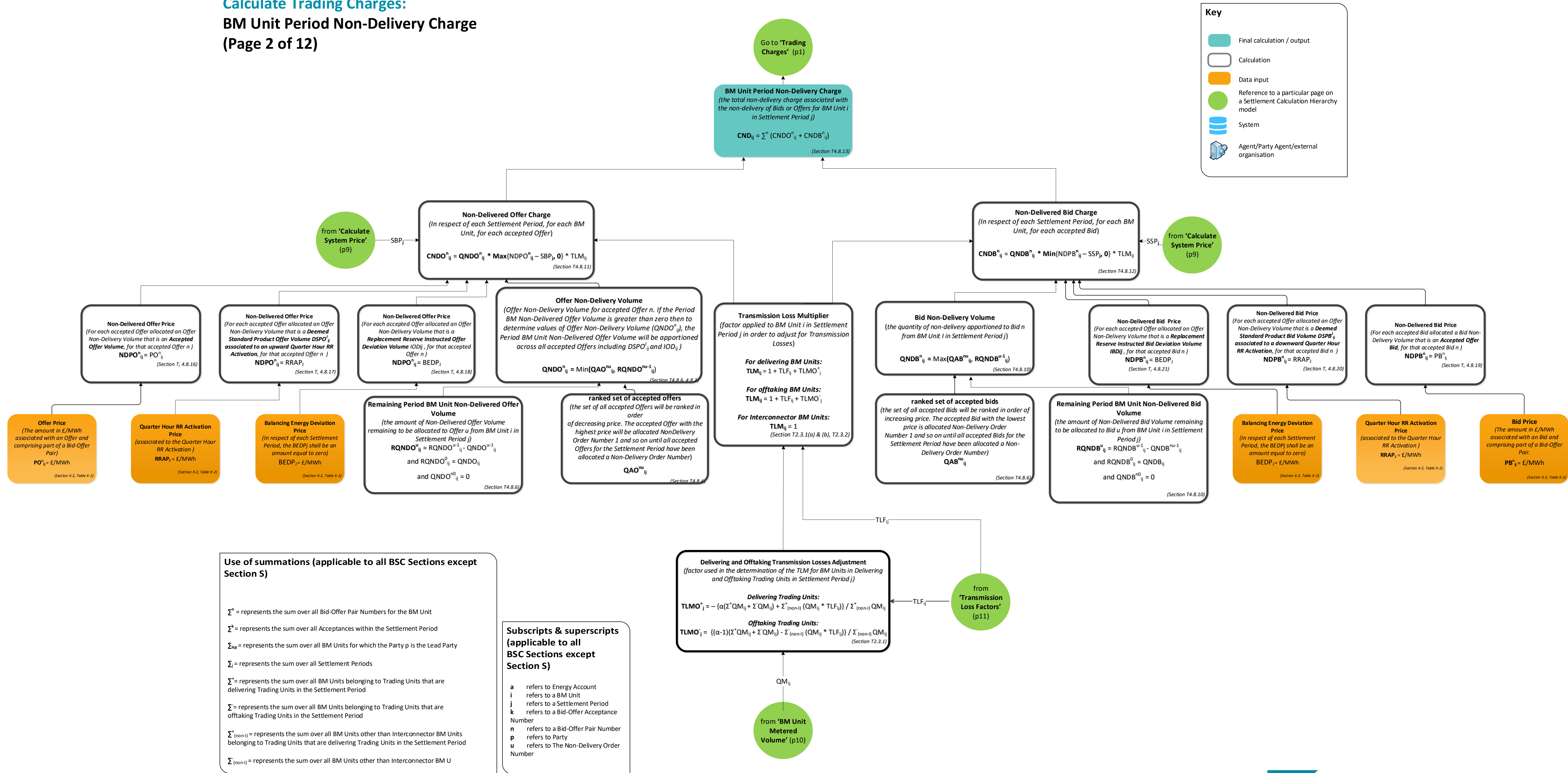
This page summarises the Trading Charge calculations for BSC Parties and the System Operator. It sums up each element of the Trading Charge to the Party/System Operator level. Follow the references on the green circles to find the detail behind each element of the Trading Charge.

Key

-  Final calculation / output
-  Calculation
-  Data input
-  Reference to a particular page on a Settlement Calculation Hierarchy model
-  Agent/Party Agent/external organisation



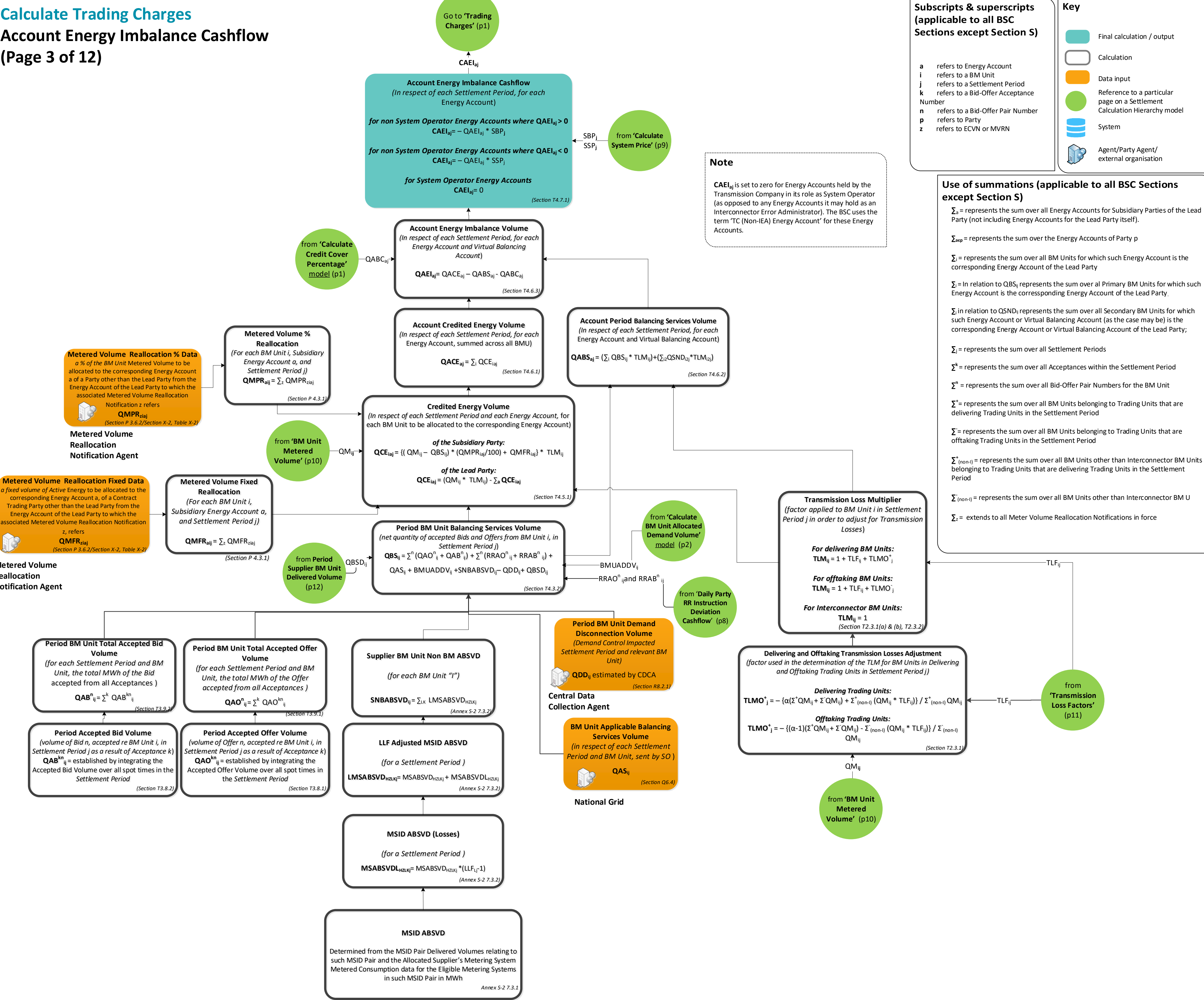
Calculate Trading Charges:
BM Unit Period Non-Delivery Charge
(Page 2 of 12)



Calculate Trading Charges

Account Energy Imbalance Cashflow

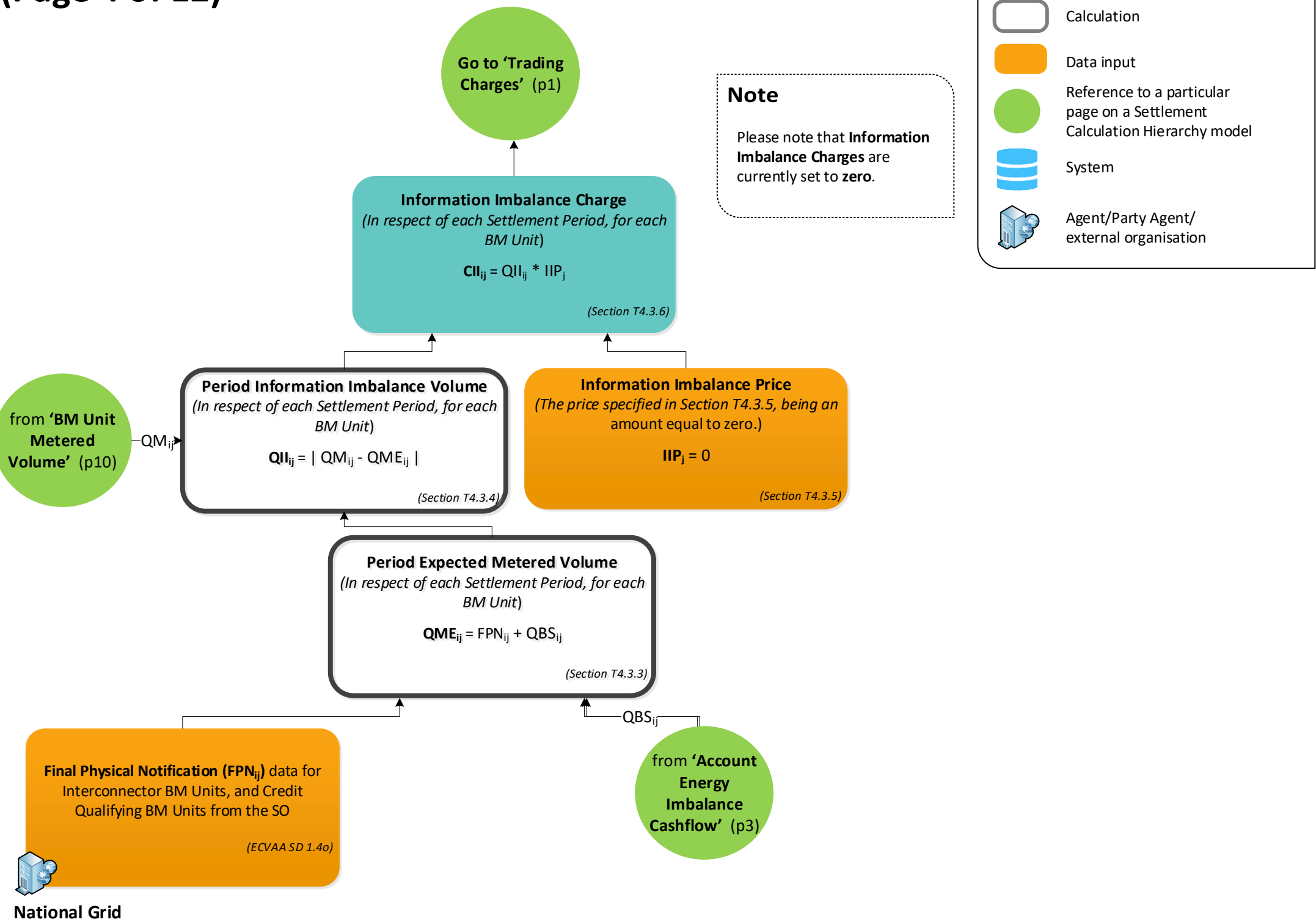
(Page 3 of 12)



Calculate Trading Charges

Information Imbalance Charge

(Page 4 of 12)



Use of summations (applicable to all BSC Sections except Section S)

- \sum^n = represents the sum over all Bid-Offer Pair Numbers for the BM Unit
- \sum^k = represents the sum over all Acceptances within the Settlement Period
- \sum_{iep} = represents the sum over all BM Units for which the Party p is the Lead Party
- \sum_j = represents the sum over all Settlement Periods

Subscripts and superscripts (applicable to all BSC Sections except Section S)

- i refers to a BM Unit
- j refers to a Settlement Period
- k refers to a Bid-Offer Acceptance Number
- n refers to a Bid-Offer Pair Number
- p refers to Party

Calculate Trading Charges

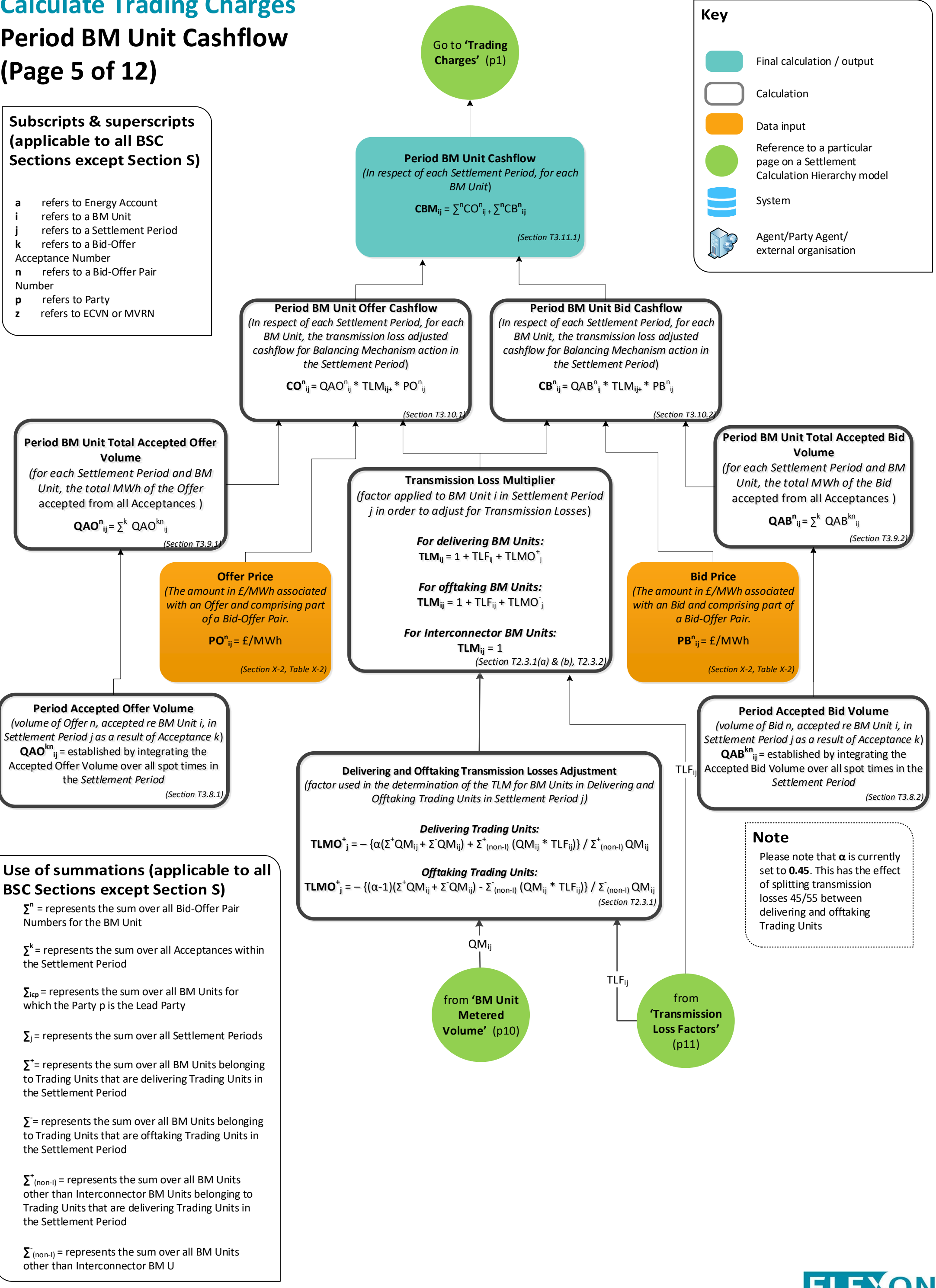
Period BM Unit Cashflow

(Page 5 of 12)

Subscripts & superscripts

(applicable to all BSC Sections except Section S)

- a refers to Energy Account
- i refers to a BM Unit
- j refers to a Settlement Period
- k refers to a Bid-Offer Acceptance Number
- n refers to a Bid-Offer Pair Number
- p refers to Party
- z refers to ECVN or MVRN



Calculate Trading Charges

Residual Cashflow Reallocation Cashflow

(Page 6 of 12)

Note

$RCRP_{aj}$ is set to zero for Energy Accounts held by the Transmission Company in its role as System Operator (as opposed to any Energy Accounts it may hold as an Interconnector Error Administrator). The BSC uses the term 'TC (Non-IEA) Energy Account' for these Energy Accounts.

Subscripts & superscripts (applicable to all BSC Sections except Section S)

a refers to Energy Account
i refers to a BM Unit
j refers to a Settlement Period
p refers to Party

Use of summations (applicable to all BSC Sections except Section S)

\sum_{aep} = represents the sum over the Energy Accounts of Party p

\sum_j = represents the sum over all Settlement Periods

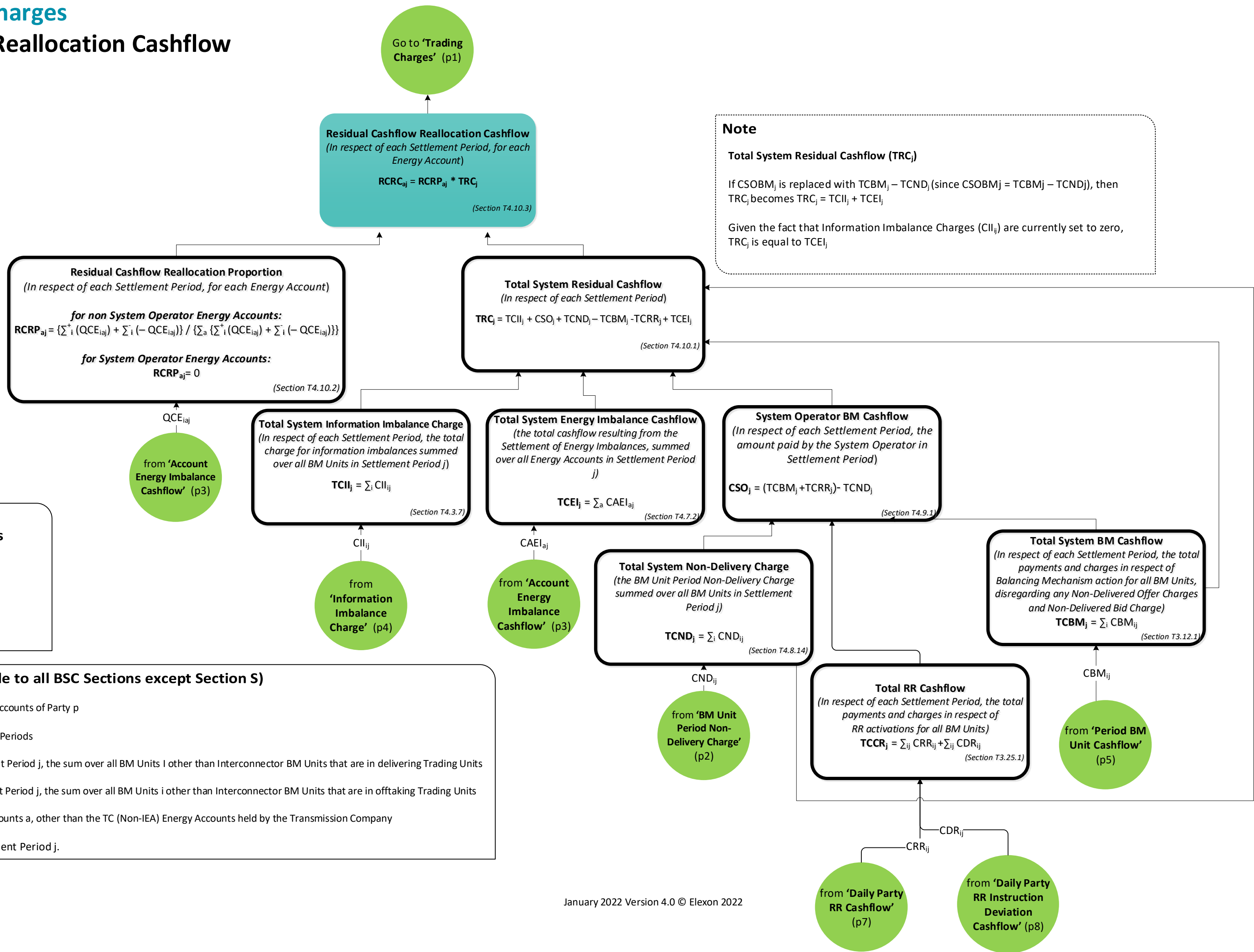
\sum_i^+ = for each Energy Account a in Settlement Period j, the sum over all BM Units i other than Interconnector BM Units that are in delivering Trading Units

\sum_i^- = for each Energy Account a in Settlement Period j, the sum over all BM Units i other than Interconnector BM Units that are in offtaking Trading Units

\sum_a = represents the sum over all Energy Accounts a, other than the TC (Non-IEA) Energy Accounts held by the Transmission Company

\sum_{ij} =sum over all BM Units i and Settlement Period j.

Settlement Calculation Hierarchy



January 2022 Version 4.0 © Elexon 2022



Calculate Trading Charges

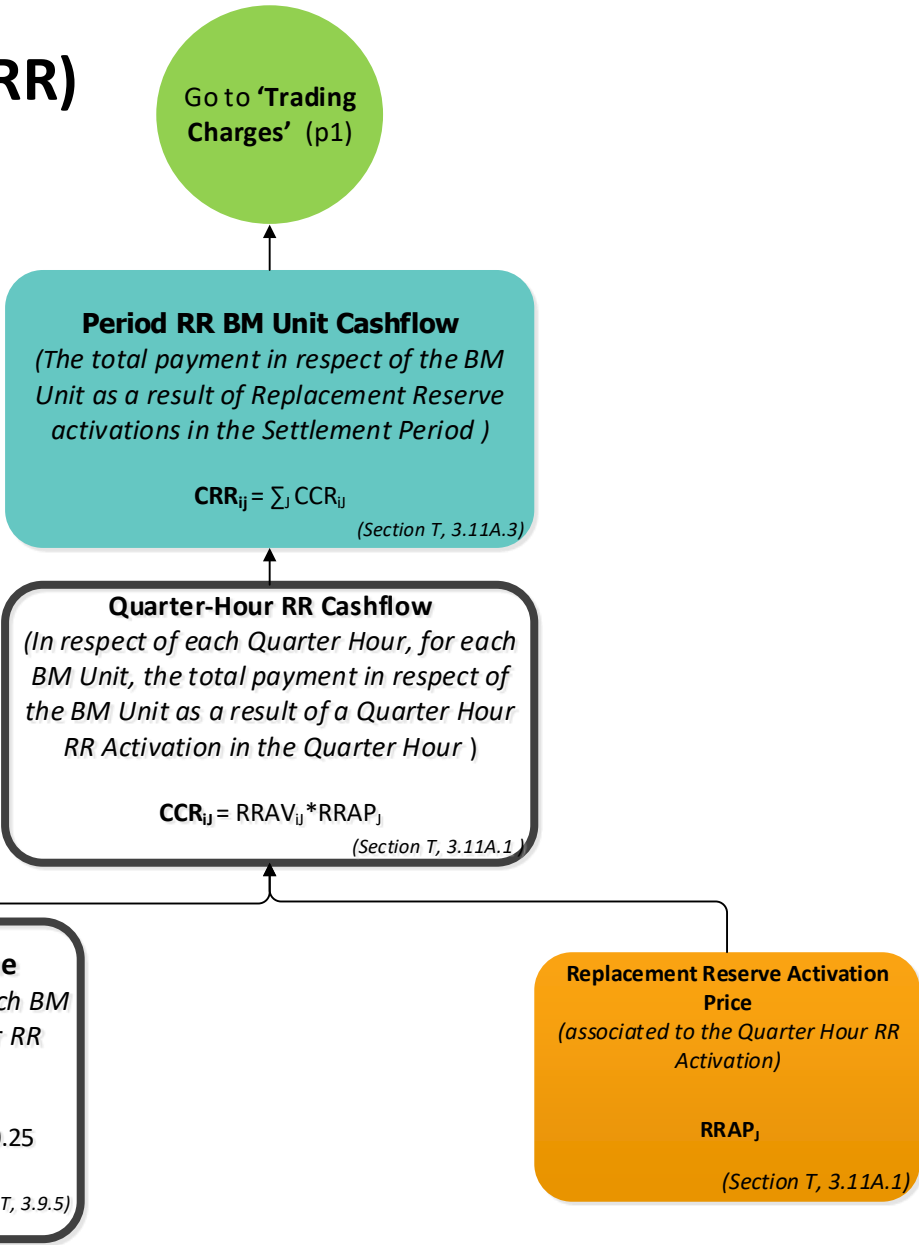
Daily Party Replacement (RR)

Reserve Cashflow

(Page 7 of 12)

**Use of summations
(applicable to all BSC
Sections except Section S)**

\sum_j represents the sum over all
Quarter- hours within
Settlement Period j



Key

Final calculation / output

Calculation

Data input

Reference to a particular page on a Settlement Calculation Hierarchy model

Agent/Party Agent/ external organisation

**Subscripts & superscripts
(applicable to all
BSC Sections except
Section S)**

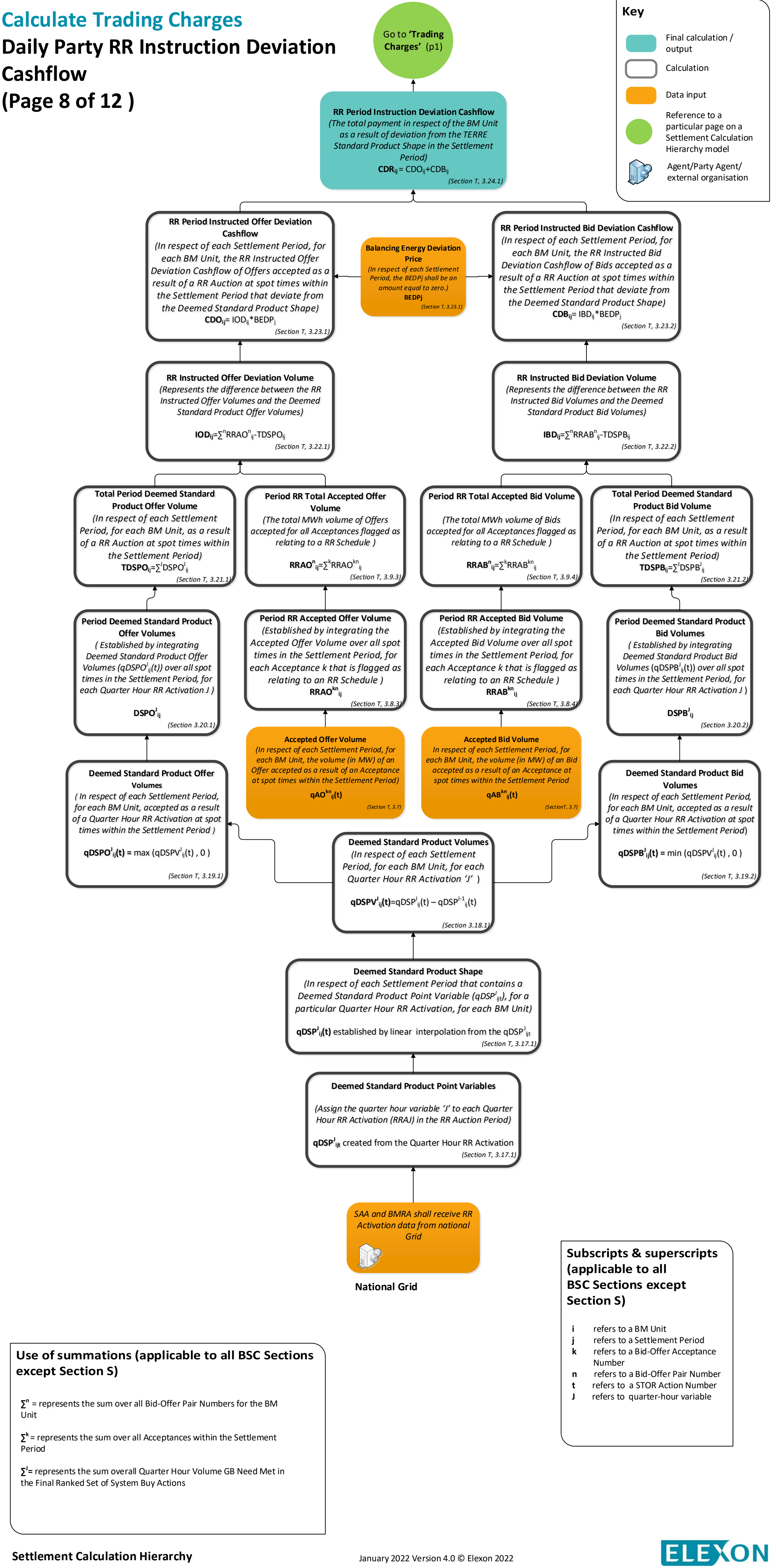
i refers to a BM Unit
j refers to a Settlement Period
J refers to quarter-hour variable

Calculate Trading Charges

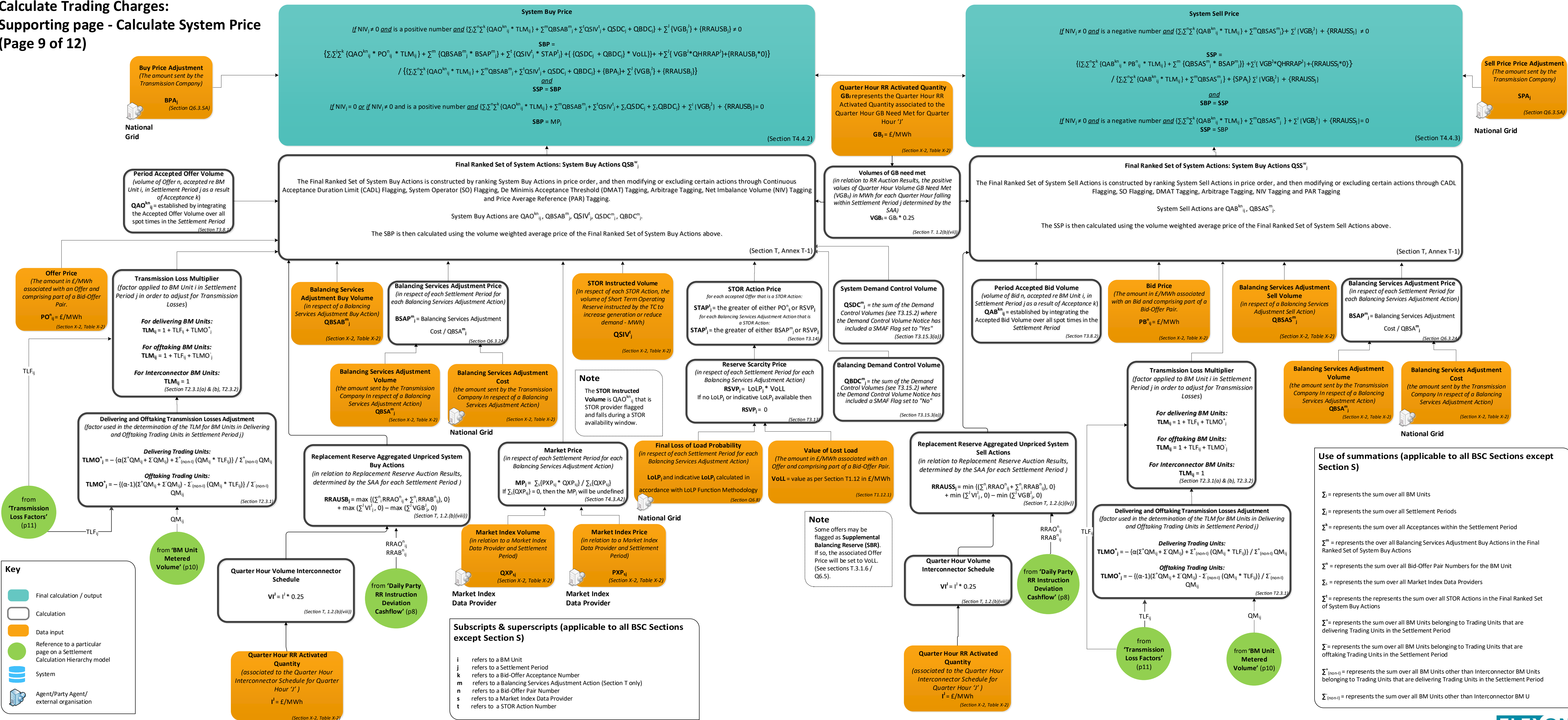
Daily Party RR Instruction Deviation

Cashflow

(Page 8 of 12)

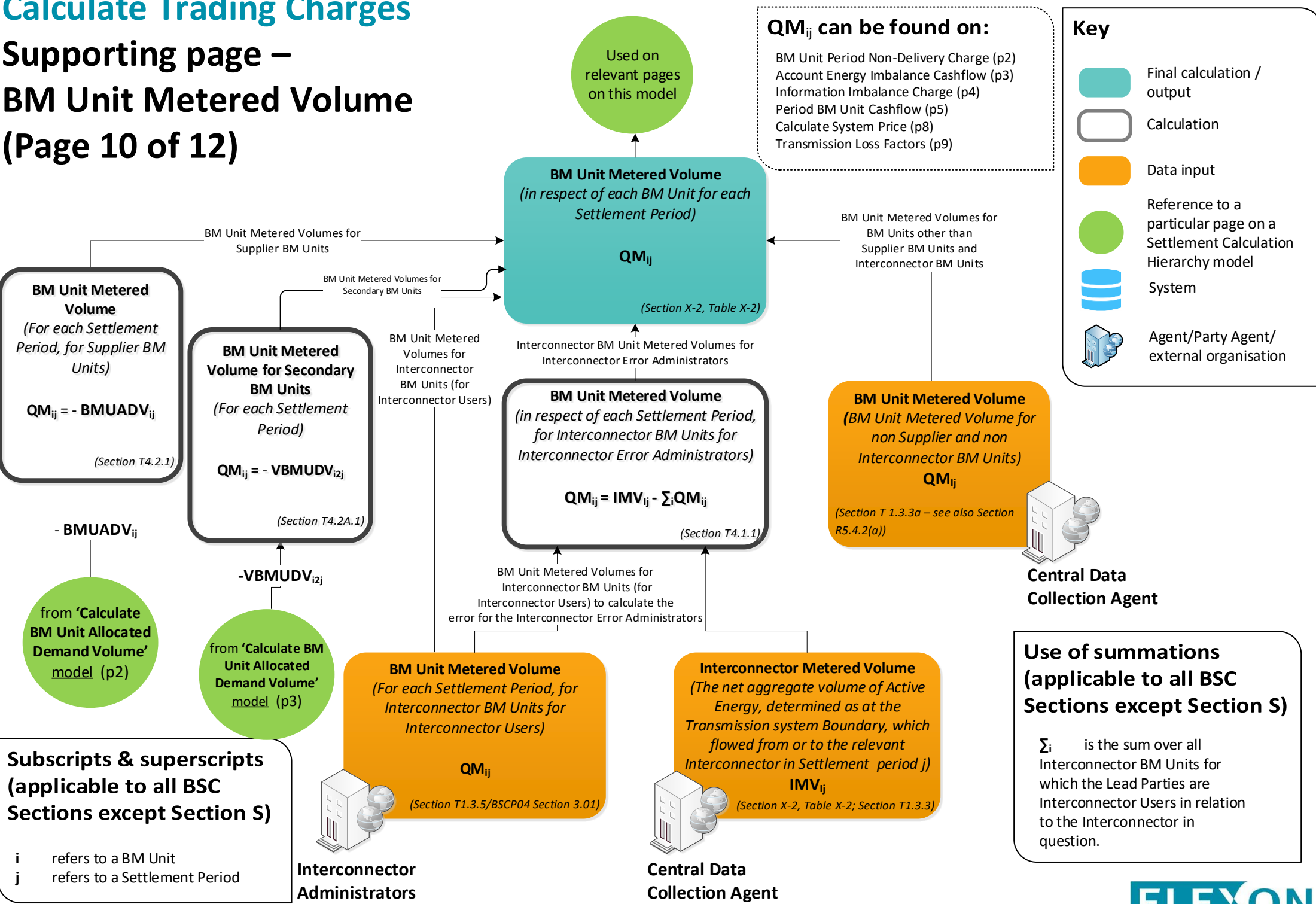


Calculate Trading Charges:
Supporting page - Calculate System Price
(Page 9 of 12)



Calculate Trading Charges

Supporting page – BM Unit Metered Volume (Page 10 of 12)



Calculate Trading Charges

Supporting page –

Transmission Loss Factors

(Page 11 of 12)

TLF_{ij} can be found on:

BM Unit Period Non-Delivery Charge (p2)

Account Energy Imbalance Cashflow (p3)

Period BM Unit Cashflow (p5)

Calculate System Price (p9)

Key

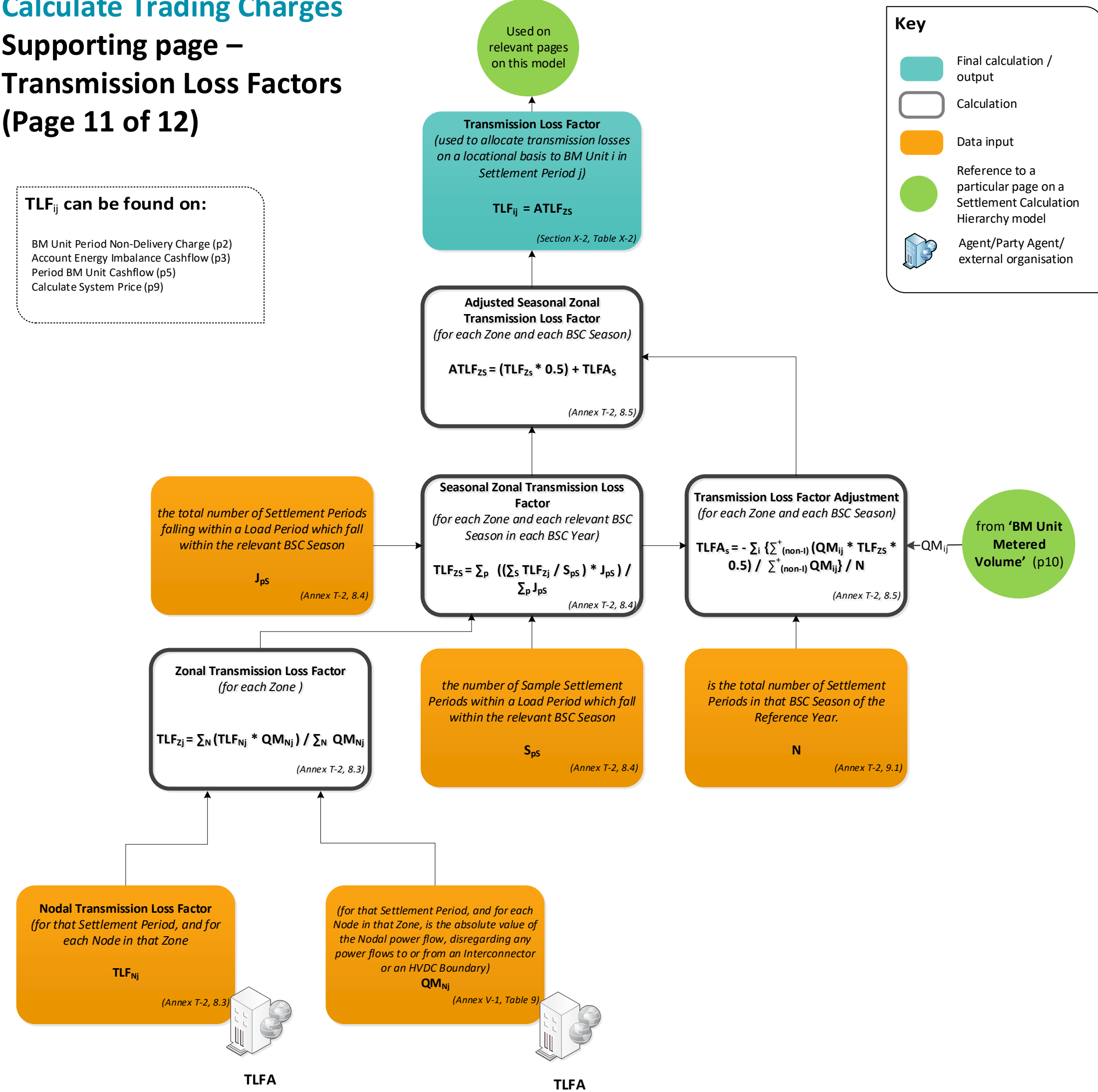
Final calculation / output

Calculation

Data input

Reference to a particular page on a Settlement Calculation Hierarchy model

Agent/Party Agent/ external organisation



Subscripts & superscripts (applicable to all BSC Sections except Section S)

i refers to a BM Unit

j refers to a Settlement Period

N refers to a Node

pS is the total number of Settlement Periods falling within a Load Period which fall within the relevant BSC Season

S refers to a BSC Season

Use of summations (applicable to all BSC Sections except Section S)

Σ_N summation by Node within a Zone

Σ_p summation by Load Period within the relevant BSC Season

Σ_s summation by Sample Settlement Periods within a Load Period which fall within the relevant BSC Season

