



ELEXON Portal walkthrough

Thomas Routier



What we will cover in this video?

- Introduction to the ELEXON Portal



<https://www.elexonportal.co.uk>

- Party Energy Indebtedness History page
 - www.elexonportal.co.uk/partyenergyindebtedness
- Party Imbalance History page
 - www.elexonportal.co.uk/imbalancehistory
- Credit Cover History / Alerting page
 - www.elexonportal.co.uk/creditcover
- Participant Financial Information
 - www.elexonportal.co.uk/participantfinancial

ELEXON Portal

PARTY ENERGY INDEBTEDNESS

Party Energy Indebtedness History

★ Del Bookmark

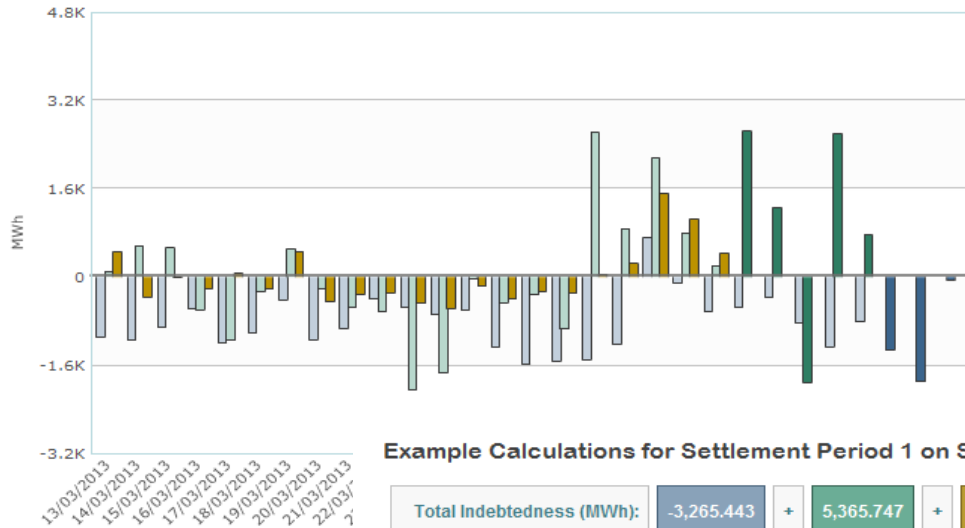
Permalink: www.elexonportal.co.uk/partyenergyindebtedness

This page shows how your current Energy Indebtedness is built up showing the contribution made by different Settlement Days within the current ECVAA Credit Check window.

The representation is correct as at Settlement Period 1 of the current day.

Participant ID

Energy Indebtedness History (13/03/2013 to 10/04/2013)



Hide Inactive Values

Example Calculations for Settlement Period 1 on Settlement Day 10/04/2013

Total Indebtedness (MWh):	-3,265.443	+	5,365.747	+	300.114	=	2,400.419	MWh
Credit Cover (£):	£2,193,458.37							
Credit Cover (MWh):	£2,193,458.37	/	CAP @ £51/MWh	=	43,008.988	MWh		
Credit Cover Percentage:	2,400.419	/	43,008.988	x 100	=	5.581	%	

Settlement Date	CEI	MEI	AEI
10/04/2013	-44.835		
09/04/2013	-1,893.846		
08/04/2013	-1,326.762		
07/04/2013	-813.828	765.429	
06/04/2013	-1,254.710	2,599.639	
05/04/2013	-821.618	-1,902.948	
04/04/2013	-360.994	1,263.639	
03/04/2013	-548.343	2,639.928	
02/04/2013	-616.920	215.283	426.523
01/04/2013	-107.966	805.238	1,057.033
31/03/2013	719.158	2,150.299	1,523.450
30/03/2013	-1,214.277	880.951	247.937
29/03/2013	-1,498.145	2,616.839	56.975
28/03/2013	-1,521.101	-938.238	-293.387
27/03/2013	-1,568.849	-315.388	-257.096
26/03/2013	-1,265.630	-466.385	-397.923
25/03/2013	-585.807	-28.653	-167.035
24/03/2013	-665.985	-1,742.810	-960.951
23/03/2013	-543.700	-2,037.567	-479.281
22/03/2013	-384.920	-621.177	-298.433
21/03/2013	-918.860	-554.271	-318.563
20/03/2013	-1,132.677	-207.939	-446.010
19/03/2013	-403.932	502.104	465.660
18/03/2013	-1,008.989	-249.094	-214.176
17/03/2013	-1,176.386	-1,145.876	64.413
16/03/2013	-572.692	-587.816	-208.681
15/03/2013	-913.643	529.196	-15.015
14/03/2013	-1,145.518	566.440	-352.781
13/03/2013	-1,080.290	107.532	467.455
	-3,265.443	5,365.747	300.114

PARTY IMBALANCE HISTORY

Party Imbalance History

★ Del Bookmark

Permalink: www.elexonportal.co.uk/imbalancehistory

Use this page to see a rolling 30 day view or a Settlement Period level in-day view of a Participant's Imbalance history.

Participant ID

Settlement Date

Period

Submit

Save Data as CSV

Settlement Day	Run Code	Energy Imbalance Volume	Credited Energy Volume	Bid Offer Volume	Energy Imbalance Cashflow	RC Reallocation Cashflow	Balancing Mechanism Cashflow	Non Delivery Cashflow
03/04/2013	II	-444.1630	17371.937	0.0000	-33403.49	6088.99		
02/04/2013	II	-363.0680	4829.732	0.0000	-22289.73	537.07		
01/04/2013	II	-927.3360	5344.264	0.0000	-53439.91	-468.78		
31/03/2013	II	-1162.2860	9219.414	0.0000	-77262.64	-433.30		
30/03/2013	II	-196.8210	10836.679	0.0000	-16933.49	4288.70		
29/03/2013	II	-55.6890	17885.061	0.0000	-7452.94	4547.20		
28/03/2013	II	244.2390	18150.789	0.0000	15304.97	-342.22		
27/03/2013	II	3.5320	16627.082	0.0000	-515.02	13628.91		
26/03/2013	II	7.8420	17368.192	0.0000	-2165.96	22460.03		
25/03/2013	II	-90.6990	18023.201	0.0000	-16318.23	24837.02		
24/03/2013	II	311.0180	10128.168	0.0000	16472.78	12135.71		
23/03/2013	II	152.9540	11136.654	0.0000	7580.83	16862.50		
22/03/2013	II	-76.4180	17935.982	0.0000	-7851.02	23071.09		
21/03/2013	II	193.0570	14811.157	0.0000	12196.18	4050.53		
20/03/2013	II	35.6270	14549.777	0.0000	5424.08	17322.44		
19/03/2013	II	-374.1830	12168.817	0.0000	-25744.86	1996.22		
18/03/2013	II	53.6650	12705.115	0.0000	307.67	10615.32		
17/03/2013	II	-0.2480	7374.652	0.0000	-8012.91	4727.83		
16/03/2013	SF	73.1900	8913.690	0.0000	2032.11	8594.42		
15/03/2013	SF	0.9840	15961.984	0.0000	-1679.79	2411.04		
14/03/2013	SF	335.1520	13124.452	0.0000	15224.92	2759.58		
13/03/2013	SF	-289.2500	15162.400	0.0000	-26160.37	2100.46		
12/03/2013	SF	178.4350	14821.935	0.0000	6291.71	13428.34		
11/03/2013	SF	36.0470	11558.597	0.0000	-714.63	9883.96		
Totals		-2354.4190	316009.731	0.0000	-219109.74	205079.06	0.00	0.00

Credit Cover History / Alerting

★ Del Bookmark

Permalink: www.elexonportal.co.uk/creditcover

Tags: credit

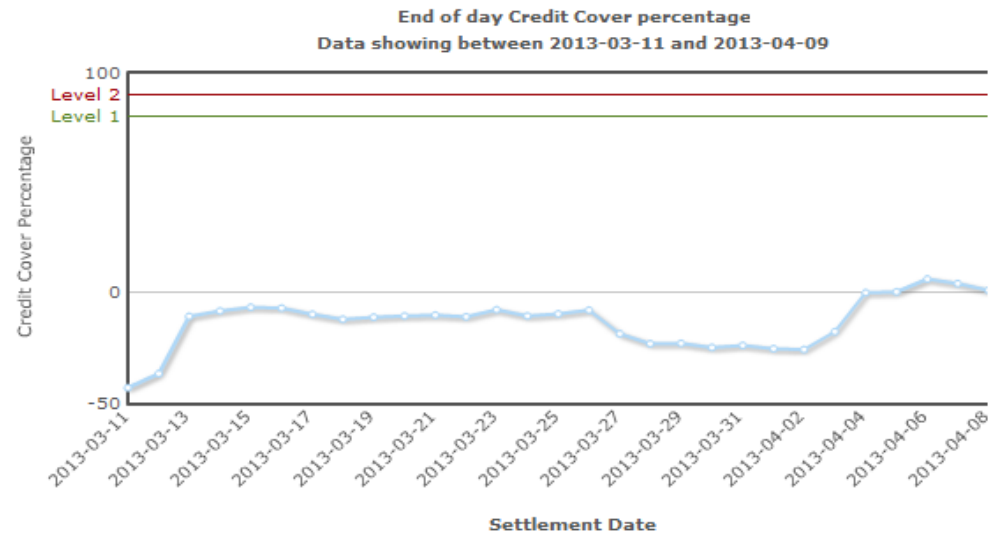
The Credit Cover History graph below provides end of day Credit Cover Percentage values for the 30 most recent days.

You can also set up Alerts to receive email notifications when the Credit Cover Percentage for any one of the participants you are responsible for breaches upper or lower threshold values that you can set. The form for entering those settings will show after you select a Participant ID.

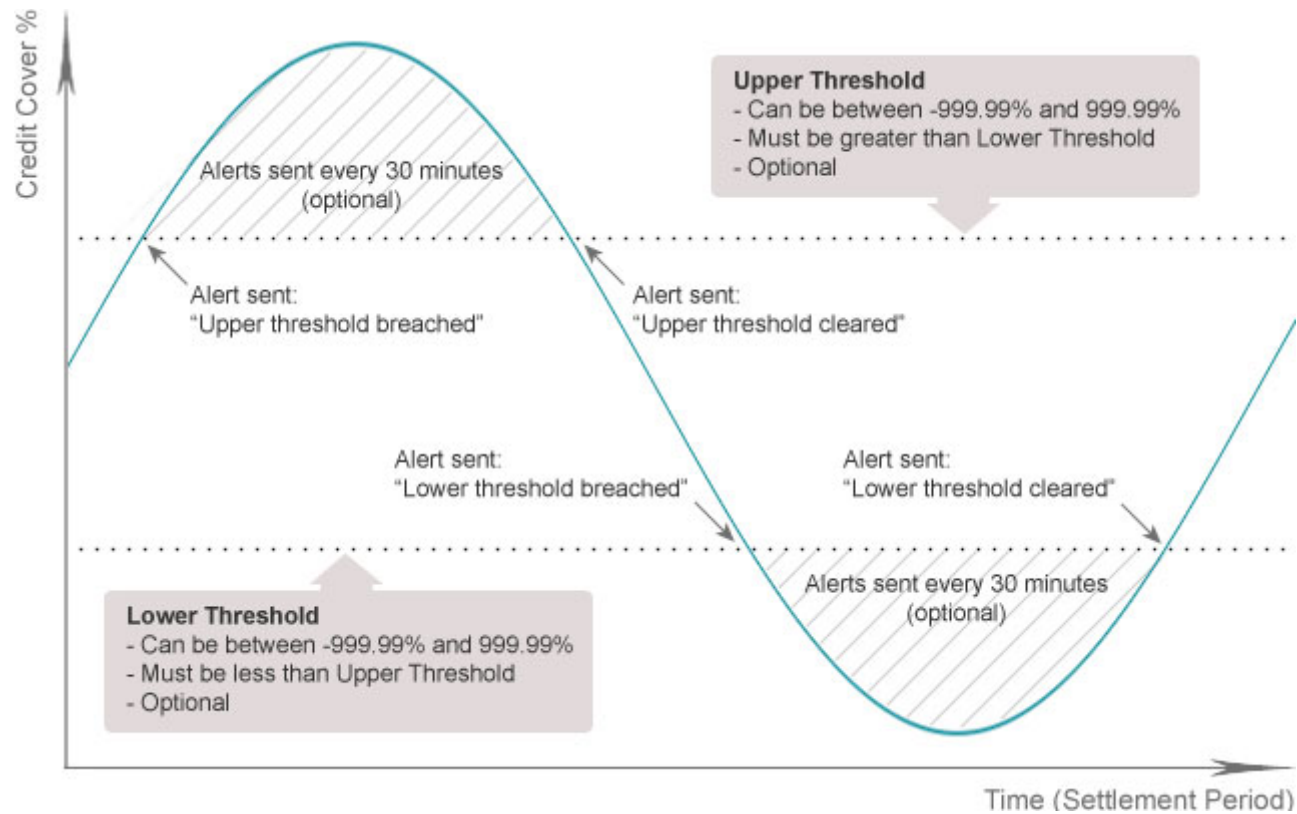
Help on setting these alerts can be found on the adjacent tab "About Credit Cover Alerting".

You can find more info on Credit here: <http://www.elexon.co.uk/pages/credit.aspx>

Select Participant ID:



ELEXON Portal



PARTICIPANT FINANCIAL INFORMATION

Participant Financial Information

Del Bookmark

Permalink: www.elexonportal.co.uk/participantfinancial

This page provides some basic financial information about the Participant IDs that you are associated with. Information such as the following is available:

- Last Advice Note and amount
- Last Confirmation Notice and amount
- Total Un-billed Backing Sheets
- Percentage of Threshold
- Credit Cover (£)
- Credit Cover Percentage
- Letter of Credit No. / Expiry Date

BSC Participant ID:

Last Advice Note	ADV9
Amount	- £18,151.13
Last Confirmation Notice	CON9
Amount	- £21,377.31
Total Un-billed Backing Sheets	£0.00
Percentage of Threshold	0.00%
Credit Cover	£2,193,458.37
Credit Cover Percentage	3.71597%
Settlement Period	26
Settlement Date	10/04/2013
Letter of Credit No. / Expiry Date	/ 20-DEC-2013

