

PAB197/05A – SUPPLIER MIGRATION UPDATES

MEETING NAME Performance Assurance Board

Date of meeting Thursday 29 June 2017

Paper number PAB197/05a

Owner/author Kathryn Gay

Purpose of paper For Information

Classification Public

Summary This paper summarises ELEXON's recommendations to the Performance Assurance Board (PAB) following its review of the monthly Supplier Migration Plan Updates (SMUS), provided by Suppliers for P322

1. Background

- 1.1 As part of Modification P322 (approved on 24 June 2015), Suppliers were required to submit Supplier Migration Plans (SMPs) by 31 August 2015 for approval by the PAB on 24 September 2015. Supplier were also required to submit monthly updates, detailing progress against their approved SMP as they migrate Advanced Meters in Profile Class (PC) 5-8 to Half Hourly (HH) Settlement from 5 November 2015 to 1 April 2017. In addition plans needed to be revised if Suppliers became aware that their approved SMP no longer reflected their migration pattern.
- 1.2 Failure to submit a monthly update was deemed non-compliant and resulted in the application of the Error and Failure Resolution (EFR) technique.
- 1.3 This paper provides:
 - A summary of the updates received (Appendix 1);
 - A Summary of the Settlement Performance of sub 100kW Metered sites at industry level (Appendix 2);
 - A summary of the P272 migration final figures (Appendix 3)

2. SMUs

- 2.1 Suppliers were requested to provide a final SMU detailing the final volume of incomplete Change of Measurement Class (CoMC) events as at 1 April 2017, the root cause of these and details on how and when they expect to resolve them.
- 2.2 Over the course of the migration ELEXON has placed seven Suppliers in EFR for non-compliance with P322 requirements.
- 2.3 The final reports show the following:
 - In November 2015, there was a total of 126,013 PC 5-8 Advanced Meter sites across the industry which fell under the P272 obligation to migrate to HH Settlement
 - As of midnight 1 April 2017, a total of 150,529 have undergone the CoMC process and are now being Settled HH (19.46% more than envisaged)
 - Of the additional 24,516:
 - 13,313 were previously PC5-8 non-Advanced Meter sites (54.03% additional non-Advanced Meter sites underwent CoMC) having met SLC12 obligations during the course of the migration;

PAB197/05A – SUPPLIER MIGRATION UPDATES

- 9,896 previously unmetered, de-energised or new connections met SLC 12 obligations during the course of the migration and therefore underwent a CoMC under P272 requirements; and
- 1,307 were previously PC3-4 sites which underwent a Change of Profile Class from PC3-4 to PC5-8, subsequently met SLC12 obligations and therefore underwent a CoMC under P272 requirements.

2.4 However, industry still has a further 17,429 to complete as of midnight 1 April 2017, of which:

- 13,590 are PC5-8 Advanced Metered sites which do not fully comply with Ofgem's SLC12 requirements and therefore are not subject to the P272 obligation to migrate to HH Settlement; and
- 3,839 are CoMCs in progress over 45WD

This provides an **actual** industry completion of 97.56% to date. (Appendix 1).

2.5 Therefore once **all** current energised, PC5-8 Advanced Metered sites are complete industry will have completed a total of 167,958 CoMCs.

3. EFR candidates and escalation

- 3.1 In accordance with the PAB's approach to non-compliance with the P272 deadline, all Suppliers are now subject to consideration for the application of the EFR technique. The details and severity of the level of non-compliance is noted in the confidential section of this paper at Supplier level.
- 3.2 The PAB will decide in which order to invite the Suppliers it determines should be escalated immediately for their non-compliance, which should be subject to EFR only and which should only be monitored by ELEXON. This determination will be based on the feedback provided at the PAB meeting on their non-compliances, severity and individual portfolio completion.
- 3.3 The PAB will take into account the total number of CoMCs outstanding as at 1 April 2017 (exclusive of new gains with effect from 1 April 2017) and the percentage of total portfolio completed over the migration period.
- 3.4 All Suppliers will still need to report on-going migration of PC5-8 Advanced Metered sites on a quarterly basis with effect from 1 November 2017 as agreed at the March 2017 PAB meeting (PAB194/05a).
- 3.5 Due to the volatile nature of reporting against P272 obligations (i.e. due to the instance volume of Change of Suppliers, Profile Class Changes, energisations, de-energisations and meter type changes) ELEXON that it will provide MPAN level reporting at MPID level to Suppliers that request it in order to aid the Suppliers rectification plans.

4. Recommendations

- 4.1 The PAB is invited to:
- a) **NOTE** the aggregate totals for the April 2017 reporting period (Appendix 1);
 - b) **NOTE** the Settlement performance for sub-100kW Metering Systems (Appendix 2); and
 - c) **NOTE** the P272 industry flight path (Appendix 3).

Appendices

Appendix 1 – Totals for the April 2017 reporting period

Appendix 2 – Settlement Performance for sub-100kW Metering Systems

Appendix 3 – P272 Industry Flight Path

PAB197/05A – SUPPLIER MIGRATION UPDATES

For more information, please contact:

Kathryn Gay, Settlement Operations Analyst

Kathryn.Gay@elexon.co.uk

020 7380 4300

PAB197/05A – SUPPLIER MIGRATION UPDATES

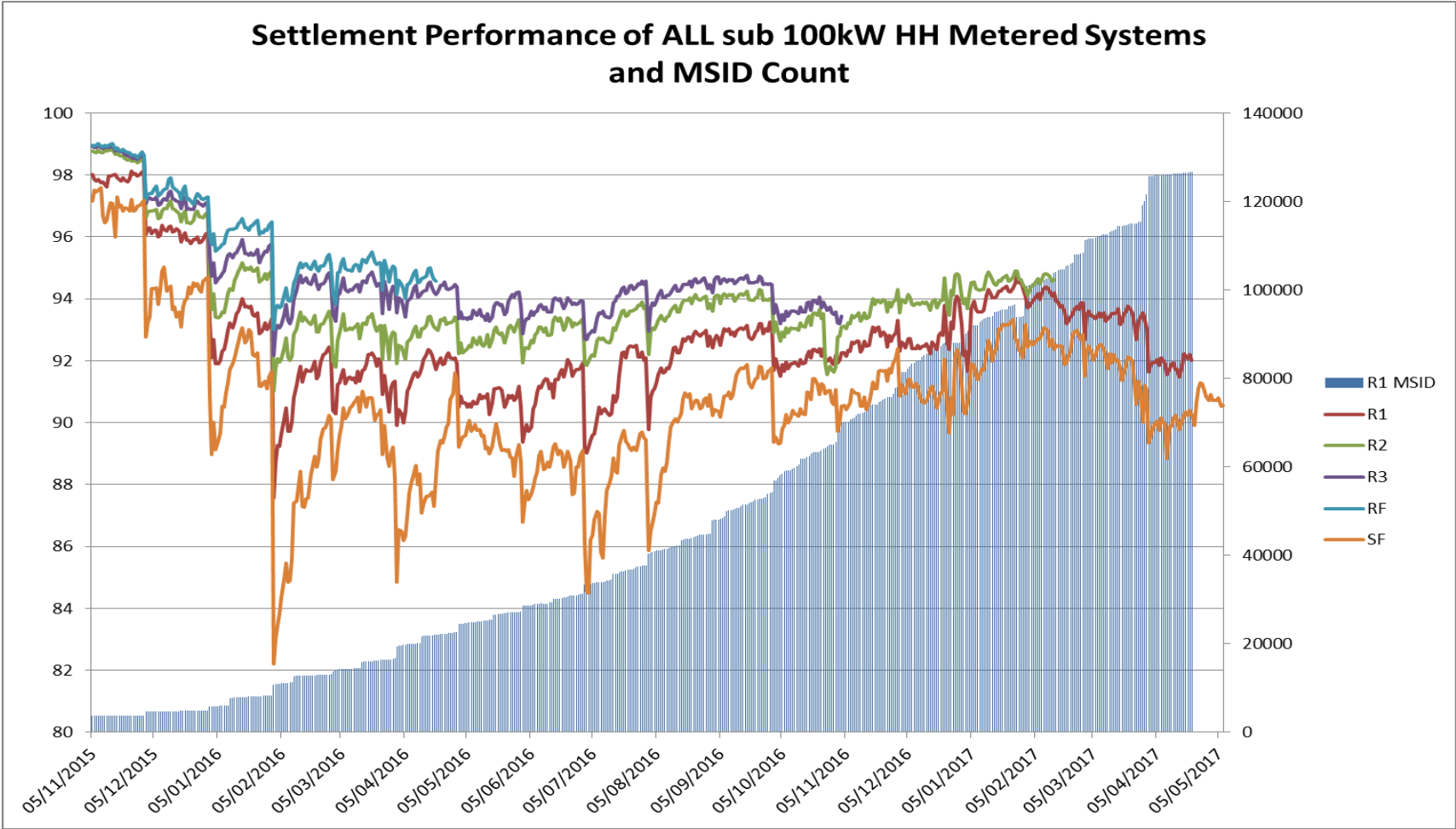
Appendix 1 - Totals for the April 2017 reporting period

| Month | Original SMP Total Opportunities | Total Additional CoMC Planned to be Completed | Planned Completed SMP (under 45 WD Obligation) | ECOES - Cumulative CoMC Totals | Additional CoMC activity (e.g. mid-contract CoMC) | Successful CoMC | CoMC in progress (within 45 WD) | CoMC in progress (outside 45 WD) | Non-dialling AMR as reported to Ofgem under SLC 12 | % Over 45WD | % of Total Planned | % Planned to have been completed |
|--------|----------------------------------|---|--|--------------------------------|---|-----------------|---------------------------------|----------------------------------|--|-------------|--------------------|----------------------------------|
| Nov-15 | 1818 | 132 | 928 | 19 | 566 | 402 | 1078 | 0 | 5 | 0.00% | 0.74% | 0.81% |
| Dec-15 | 3179 | 957 | 1745 | 264 | 780 | 1257 | 2999 | 9 | 41 | 0.09% | 1.80% | 2.34% |
| Jan-16 | 3427 | 437 | 4395 | 3434 | 803 | 3119 | 2802 | 232 | 41 | 1.34% | 4.16% | 6.18% |
| Feb-16 | 3451 | 304 | 4983 | 7749 | 2325 | 4297 | 2264 | 594 | 32 | 2.53% | 8.14% | 10.53% |
| Mar-16 | 6134 | 4292 | 6136 | 10878 | 1453 | 3633 | 3410 | 860 | 885 | 2.53% | 11.19% | 15.90% |
| Apr-16 | 9176 | 1347 | 5730 | 17209 | 3611 | 5105 | 8130 | 1230 | 317 | 2.30% | 16.43% | 20.91% |
| May-16 | 3539 | 621 | 5490 | 22027 | 1106 | 4368 | 3244 | 2004 | 306 | 3.37% | 19.71% | 25.70% |
| Jun-16 | 3690 | 509 | 3342 | 26321 | 1977 | 3717 | 2427 | 3125 | 423 | 4.73% | 23.13% | 28.62% |
| Jul-16 | 3519 | 2408 | 5983 | 33065 | 3769 | 5766 | 2515 | 1956 | 553 | 2.63% | 28.86% | 33.85% |
| Aug-16 | 4451 | 2389 | 5009 | 37869 | 4338 | 6380 | 1958 | 2122 | 361 | 2.59% | 35.30% | 38.23% |
| Sep-16 | 6044 | 4956 | 10671 | 42609 | 4757 | 7208 | 3572 | 1990 | 2134 | 2.11% | 42.48% | 47.56% |
| Oct-16 | 9955 | 6888 | 9532 | 54108 | 4754 | 9166 | 4349 | 2162 | 8539 | 1.87% | 50.83% | 55.89% |
| Nov-16 | 4736 | 3666 | 8927 | 68399 | 6147 | 9948 | 4370 | 2275 | 9200 | 1.71% | 60.31% | 63.69% |
| Dec-16 | 3411 | 5369 | 10287 | 85562 | 5703 | 6013 | 3034 | 2452 | 9871 | 1.84% | 67.57% | 72.69% |
| Jan-17 | 2490 | 10325 | 7223 | 102771 | 6817 | 8166 | 3781 | 2480 | 11482 | 1.76% | 77.55% | 79.00% |
| Feb-17 | 2731 | 4362 | 8945 | 116699 | 5211 | 8188 | 1817 | 1736 | 12072 | 1.13% | 85.97% | 86.82% |
| Mar-17 | 5294 | 2699 | 14252 | 129588 | 6112 | 14249 | 2773 | 1685 | 11192 | 1.02% | 99.28% | 99.28% |
| Apr-17 | 926 | 440 | 829 | 150529 | 3402 | 4695 | 2121 | 1718 | 13590 | 0.91% | 101.89% | 100.00% |

| Final figures | Incl. SLC12 | Excl. SLC12 |
|-------------------------------|-------------|-------------|
| Cumulative left to complete | 17429 | 3839 |
| Average completion rate | 8956 | 8956 |
| Forecast months to completion | 1.95 | 0.43 |

PAB197/05A – SUPPLIER MIGRATION UPDATES

Appendix 2 - Settlement performance for sub-100kW Metering Systems



PAB197/05A – SUPPLIER MIGRATION UPDATES

Appendix 3 – P272 Industry Flight Path

